

ALDRO



Child Protection and Safeguarding Policy

7a & 8a

For information specifically relating to the Coronavirus pandemic please refer to Appendix 1 of this policy (p56) and the following three documents, which can be found on the Aldro website:

1. Covid-19 Aldro Risk Assessment
2. Covid-19 Planning for the return to School – Advice for Parents and Pupils (CT 2020)
3. Testing at home – the process

Author:	Assistant Head (Pastoral) (GW)
Last update:	September 2021
Governor Lead:	All Governors (Margot Spencer)
Governor Review:	November 2021
Next author review due:	September 2022
Next Governor review due:	November 2022

Content	Page		Content	Page
Safeguarding Statement & Key personnel	3		Brook Traffic Light Tool	36
Terminology	4		Mental Health	39
Introduction & Guidance Documents	5		Anti-Bullying & Cyber Bullying	39
Policy Principles & Values	6		Online Safety	39
Policy Aims	6		Racist Incidents	40
Supporting Children	7		Radicalisation and Extremism	40
Prevention/Protection	7		Domestic Abuse	43
Safe School, Safe Staff	8		Child Exploitation	43
Roles and Responsibilities- All staff	9		Serious Violence	45
Roles and Responsibilities – Headmaster	10		Youth Produced Sexual Imagery (Sexting)	45
Roles and Responsibilities- DSL & Deputy DSL	11		Female Genital Mutilation (FGM)	47
Roles and Responsibilities – Governing Body	13		Forced Marriage	48
Confidentiality & Sharing Information	14		Honour based Violence	49
Child Protection Procedures	15		One Chance Rule	49
Child Protection Procedures Flowchart	17		Private Fostering Arrangements	49
Dealing with Disclosure	18		Children Looked After	51
Allegations Against Adults Working with Children	20		Children Missing Education (CME)	51
What is Child Abuse	21		Pupils Missing Out on Education (PMOOE)	52
Indicators of Abuse - Neglect	23		Attendance and Behaviour	52
Indicators of Abuse – Emotional Abuse	25		Physical Intervention	53
Indicators of Abuse – Physical Abuse	27		Whistle-blowing	53
Indicators of Abuse – Sexual Abuse	29		Linked Policies	54
Sexual Violence & Sexual Harassment between children in school – Peer on Peer Abuse	31		Additional Resources	55
Harmful Sexual Behaviour	35		Appendix – Covid 19	56

Safeguarding Statement 2021

“It could happen here”

We recognise our moral and statutory responsibility to safeguard and promote the welfare of all children.

We make every effort to provide an environment in which children and adults feel safe, secure, valued and respected, and feel confident to talk if they are worried, believing they will be effectively listened to.

The purpose of this policy is to provide staff, volunteers and governors with the framework they need in order to keep children safe and secure in our school. The policy also informs parents and carers how we will safeguard their children whilst they are in our care.

Key Personnel

Designated Safeguarding Lead (DSL) is:

Mr G. Watson, Assistant Head (Pastoral) 01483 813548 watsong@aldro.org

Deputy DSL is:

Miss Suzie Shaw (Head of Junior School) 01483 813548 shaws@aldro.org

The nominated child protection governor is:

Rev Margot Spencer (Lead Governor) 01483 416333 safegov@aldro.org

Mr C Carlier, Headmaster 01483 810266 head@aldro.org

The Chair of Governors is:

Mr Tim Johns chair@aldro.org

Surrey's safeguarding Children's Service (SSCS): SWRAIS@surreycc.gov.uk

Urgent referrals should be made by telephone 0300 470 9100 cspa@surreycc.gov.uk

Terminology

Safeguarding and promoting the welfare of children is defined as:

- protecting children from maltreatment;
- preventing impairment of children's health or development;
- ensuring that children grow up in circumstances consistent with the provision of safe and effective care;
- taking action to enable all children to have the best outcomes.

Child Protection is a part of safeguarding and promoting welfare. It refers to the activity that is undertaken to protect specific children who are suffering, or are likely to suffer, significant harm.

Early Help means providing support as soon as additional needs and support emerge at any point in a child's life.

Staff refers to all those working for or on behalf of the school, full or part time, temporary or permanent, in either a paid or voluntary capacity.

Child(ren) includes everyone under the age of 18. On the whole, this will apply to pupils of our school; however, the policy will extend to visiting children and students from other establishments

Parents refers to birth parents and other adults who are in a parenting role, for example step-parents, foster carers and adoptive parents.

Social Care refers to Children's Services in the area in which the child is resident, unless a child is a Child Looked After then this will be the Children's Services in their home authority.

SPA refers to the Single Point of Access (Surrey).

Introduction

This policy has been developed in accordance with the principles established by the Children Acts 1989 and 2004; the Education Act 2002, and in line with statutory guidance: 'Working Together to Safeguard Children' 2018, Revised Safeguarding Statutory Guidance 'Framework for the Assessment of Children in Need and their Families' 2000, 'What to do if You are Worried a Child is Being Abused' 2015.

The policy also reflects, both statutory guidance 'Keeping Children Safe in Education' 2021 (KCSIE), and Surrey Safeguarding Children Board (SSCB) Procedures.

The Governing body takes seriously its responsibility under section 175 of the Education Act 2002 to safeguard and promote the welfare of children; and to work together with other agencies to ensure there are robust arrangements within our school to identify, assess, and support those children who are suffering harm or at risk of suffering harm.

This policy applies to all members of staff and governors in the school

Guidance and documents referred to in this policy

- [Surrey Safeguarding Children Board protocols, guidance and procedures](#)
- [Working Together to Safeguard Children \(2018\)](#)
- [Keeping Children Safe in Education 2021 \(KCSIE\)](#)
- [Disqualification under the Childcare Act 2006 \(2018\)](#)
- [Prevent Duty Guidance: for England and Wales \(July 2015\) \(and the briefing note The Prevent duty: Departmental advice for schools and childminders \(June 2015\)\)](#)
- [FGM Act 2003 Mandatory Reporting Guidance 2016](#)
- ['What to do if you are worried a child is being abused' 2015](#)
- [Teacher Standards 2011](#)
- [Information Sharing Advice for Practitioners' guidance 2018](#)
- [SCC Children Missing Education](#)
- [SCC Touch and the use of physical intervention when working with children and young people](#)
- [The use of social media for on-line radicalisation \(July 2015\)](#)
- [When to call police](#)

This policy also has regard to: [Non-statutory interim supplements to KCSIE: Coronavirus \(COVID-19\): safeguarding in schools, colleges and other providers \(2021 subject to DfE updates\)](#) and [Safeguarding and remote education during coronavirus \(COVID-19\)](#)

Policy Principles & Values

- ✓ The welfare of the child is paramount
- ✓ Maintain an attitude of “It could happen here”
- ✓ Children have a right to feel safe and secure; they cannot learn effectively unless they do so.
- ✓ All children have a right to be protected from harm and abuse.
- ✓ All staff have a role in the prevention of harm and abuse and an equal responsibility to act immediately on any suspicion or disclosure that may indicate a child is at risk of harm, either in the school or in the community, taking into account contextual safeguarding, in accordance with statutory guidance.
- ✓ We acknowledge that working in partnership with other agencies protects children and reduces risk and so we will engage in partnership working to protect and safeguard children.
- ✓ Whilst the school will work openly with parents as far as possible, it reserves the right to contact Social Care or the police, without notifying parents if this is believed to be in the child’s best interests.

Policy Aims

To demonstrate the school’s commitment regarding safeguarding and child protection to pupils, parents and other partners.

To raise the awareness of all teaching and non-teaching staff of their responsibilities to safeguard children through identifying and reporting possible cases of abuse.

To enable the school to contribute effectively to Early Help, assessments of need and support for those children.

To provide robust school systems and procedures that are followed by all members of the school community in cases of suspected abuse.

To develop and promote effective working relationships with other agencies, in particular Early Help providers, the Police, Health and Social Care.

To ensure that all staff working within our school who have substantial access to children have been checked as to their suitability, including verification of their identity, qualifications, and a satisfactory DBS check (according to KCSIE guidance), and a single central record is kept for audit.

We comply with the [Disqualification under the Childcare Act 2006](#) guidance issued in February 2015, as amended in September 2018.

Supporting Children

We recognise that school may provide a safe place and the only stability in the lives of children who have been abused or who are at risk of harm.

We recognise that a child who is abused or witnesses abuse and/or violence may feel helpless and humiliated, may blame themselves, and find it difficult to develop and maintain a sense of self-worth.

We accept that research shows that the behaviour of a child in these circumstances may range from that which is perceived to be normal to aggressive or withdrawn.

Our school will support all children:

- We will promote a caring, safe and positive environment within the school.
- We will encourage self-esteem and self-assertiveness, through the curriculum and through positive relationships within the school community.
- We will ensure children are taught to understand and manage risk through personal, social, health and economic (PSHE) education and Relationship and Sex Education (RSE) and through all aspects of school life. This includes online safety.
- We will never give children the impression that they are creating a problem by reporting abuse, sexual violence or sexual harassment.
- We will respond sympathetically to any requests for time out to deal with distress and anxiety.
- We will offer details of helplines, counselling or other avenues of external support.
- We will liaise and work in partnership with other support services and agencies involved in Early Help and the safeguarding of children.
- We will notify Social Care immediately if there is a significant concern.
- We will provide continuing support to a child about whom there have been concerns who leaves the school by ensuring that information is shared under confidential cover to the child's new setting and ensure the school medical records are forwarded as a matter of priority and within statutory timescales.

Prevention / Protection

We recognise that the school plays a significant part in the prevention of harm to our children by providing children with good lines of communication with trusted adults, supportive friends and an ethos of protection.

The school will:

- Establish and maintain an ethos where children feel safe and secure, are encouraged to talk and are always listened to.
- Include regular consultation with children e.g. through questionnaires, participation in anti-bullying activity, asking children to report whether they have had happy/sad lunchtimes
- Ensure that all children know they can access an adult in the school whom they can approach if they are worried or in difficulty.

- Include safeguarding across the curriculum, including PSHE, providing opportunities which equip children with the skills they need to stay safe from harm and to know to whom they should turn for help. In particular, this will include anti-bullying work, online-safety, accessing emergency services, road safety, pedestrian and cycle training.
- Ensure all staff are aware of school guidance for their use of mobile technology and have discussed safeguarding issues around the use of mobile technologies and their associated risks.

Safe School, Safe Staff

We will ensure that:

- The school operates a safer recruitment procedure that includes statutory checks on staff suitability to work with children.
- All staff receive information about the school's safeguarding arrangements, the school's safeguarding statement, staff code of conduct policy, child protection policy, the role and names of the Designated Safeguarding Lead and their deputy(s), and [Keeping Children Safe in Education part 1 and annex A](#).
- All staff receive training on Peer-to-Peer abuse and how to manage a report, following a disclosure outlined on page 31.
- Induction training will also include information about the school's Behaviour and Anti-bullying procedures.
- All staff receive safeguarding and child protection training at induction in line with advice from [Surrey Safeguarding Children's Partnership](#) which is regularly updated, and receive safeguarding and child protection updates (for example, via email, e-bulletins and staff meetings), as required, but at least annually. Any significant updates are communicated at the earliest opportunity, either through training, staff meetings or email.
- All members of staff are trained in and receive regular updates in online safety and reporting concerns.
- All staff and governors have regular child protection awareness training, updated by the DSL as appropriate, to maintain their understanding of the signs and indicators of abuse.
- The child protection policy is made available via the school website and that parents/carers are made aware of this policy.
- All parents/carers are made aware of the responsibilities of staff members regarding child protection procedures through the publication of the Child Protection Policy and reference to it in the school's handbook.
- We provide a coordinated offer of Early Help when additional needs of children are identified and contribute to early help arrangements and inter-agency working and plans.
- Our lettings policy will seek to ensure the suitability of adults working with children on school sites at any time.
- Community users organising activities for children are aware of the school's Child Protection Policy, guidelines and procedures.

- The name of the designated members of staff for child protection, the Designated Safeguarding Lead and deputy (deputies), are clearly advertised in the school with a statement explaining the school's role in referring and monitoring cases of suspected harm and abuse
- All staff will be given a copy of Part 1 and Annex A of Keeping Children Safe in Education 2021 and will sign to say they have read and understood it. This applies to the Governing Body in relation to part 2 of the same guidance.

Roles and Responsibilities

All School Staff:

All staff have a key role to play in identifying concerns early and in providing help for children. To achieve this, they will:

- Provide a safe environment in which children can learn.
- Establish and maintain an environment where children feel secure, are encouraged to talk and are listened to.
- Ensure children know that there are adults in the school they can approach if they are worried or have concerns.
- Plan opportunities within the curriculum for children to develop the skills they need to assess and manage risk appropriately and keep themselves safe.
- Attend training in order to be aware of and alert to the signs of abuse.
- Maintain an attitude of "it could happen here" with regards to safeguarding.
- Know how to respond to a pupil who discloses harm or abuse following training of 'Working together to Safeguard Children' (2018), and 'What to do if you are worried a child is being Abused' (2015).
- Record their concerns if they are worried that a child is being abused and report these to the DSL immediately that day. If the DSL is not contactable immediately a Deputy DSL should be informed.
- Be prepared to refer directly to the SPA, and the police if appropriate, if there is a risk of significant harm and the DSL or their Deputy is not available.
- Follow the allegations procedures (page 19) if the disclosure is an allegation against a member of staff.
- Follow the procedures set out by the Surrey Safeguarding Children's Board and take account of guidance issued by the Department for Education.
- Provide support for children subject to Early Help, Child in Need or Child Protection that is in keeping with their plan.
- Treat information with confidentiality but never promising to "keep a secret".
- Notify the DSL or their Deputy of any child on a child protection plan or child in need plan who has unexplained absence.
- Have an understanding of early help and be prepared to identify and support children who may benefit from early help.
- Identify children who may benefit from early help, liaising with the DSL in the first instance. (Options may include managing support for the child internally via the school's pastoral support process or an early help assessment.)
- Be particularly alert to the potential need for early help for a child who:
 - Is disabled and has specific additional needs

- Has special educational needs (whether or not they have a statutory Education, Health and Care Plan)
- Is a young carer.
- Liaise with other agencies that support pupils and provide early help.
- Know who the DSL and Deputy DSL are and know how to contact them.
- Have an awareness of the role of the DSL, the schools Child Protection Policy, Behaviour Policy and Staff Code of Conduct, and procedures relating to the safeguarding response for children who go missing from education.
- Be mindful that the Teacher Standards states that teachers should safeguard children's wellbeing and maintain public trust in the teaching profession as part of their professional duties. Assist the Governing Body and Headmaster in fulfilling their safeguarding responsibilities set out in legislation and statutory guidance.

The Headmaster

In addition to the role and responsibilities of all staff the Headmaster will ensure that:

- The school fully contributes to inter-agency working in line with Working Together to Safeguard Children 2018 guidance.
- The Child Protection and Safeguarding Policy and procedures are implemented and followed by all staff.
- All staff are aware of the role of the designated safeguarding lead (DSL), including the identity of the DSL and any deputies.
- Sufficient time, training, support, funding, resources, including cover arrangements where necessary, are allocated to the DSL to carry out their role effectively, including the provision of advice and support to school staff on child welfare and child protection matters, to take part in strategy discussions/meetings and other inter-agency meetings and/or support other staff to do so; and to contribute to the assessment of children.
- Provide opportunities for a co-ordinated offer of early help when additional needs of children are identified
- Ensure Deputy DSLs are trained to the same standard as the DSL and the role is explicit in their job description.
- With the designated safeguarding lead ensure adequate and appropriate cover arrangements are in place for any out of hours/out of term activities.
- Where there is a safeguarding concern that the child's wishes and feelings are taken into account when determining what action to take and what services to provide.
- Child-centred systems and processes are in place for children to express their views and give feedback.
- All staff feel able to raise concerns about poor or unsafe practice and that such concerns are handled sensitively and in accordance with the whistle-blowing procedures.
- That pupils are provided with opportunities throughout the curriculum to learn about safeguarding, including keeping themselves safe online.
- Ensure that allegations or concerns against staff are dealt with in accordance with guidance from Department for Education (DfE), Surrey Safeguarding Children Board (SSCB) and Surrey County Council (SCC).

- Ensure that statutory requirements are met to make a referral to the Disclosure and Barring Service and additionally in the case of teaching staff the Teacher Regulation Agency where they think an individual has engaged in conduct that harmed (or is likely to harm) a child; or if the person otherwise poses a risk of harm to a child.

The Designated Safeguarding Lead:

In addition to the role and responsibilities of all staff the DSL:

- Holds the lead responsibility for safeguarding and child protection (including lead responsibility for online safety) in the school; this responsibility is not able to be delegated.
- Will have an “it could happen here” approach to safeguarding.
- Will liaise with the local authority and work in partnership with other agencies in line with Working Together to Safeguard Children.
- Will manage and submit a referral for a child if there are concerns about suspected harm or abuse, to the Surrey Multi-Agency Safeguarding Hub (SPA), and act as a point of contact and support for school staff. Referrals should be made safe and securely by email to cspa@surreycc.gov.uk using the [Multi Agency Referral Form](#) (MARF) urgent referrals should be made by telephone 0300 470 9100. If the referral is required to be made to another county, the DSL will follow that counties referral process.
- Will refer cases to the Channel programme where there is a radicalisation concern via the SPA and act as a point of contact and support for staff to discuss concerns.
- Will refer cases where a crime may have been committed to the Police as required.
- Will liaise with the “case manager” and Local Authority “Designated Officer” for child protection concerns in cases which concern a member of staff or a volunteer; and refer cases where a person is dismissed or has left service due to risk/harm to a child to the Disclosure and Barring Service and Teaching Regulation Agency, as required.
- Will follow DfE and KCSIE guidance ‘Peer on Peer Abuse’ when a concern is raised that there is an allegation of a pupil abusing another pupil within the school (see pages 34-37)
- Be available during term time (during school hours) for staff in school to discuss any safeguarding concerns. Appropriate and adequate cover arrangements will be arranged by the DSL and the school leadership for any out of hours/term activities.
- Act as a source of support and expertise in carrying out safeguarding duties for the whole school community.
- Will encourage and promote a culture of listening to children and taking account of their wishes and feelings, amongst all staff.
- Will access training and support to ensure they have the knowledge and skills required to carry out the role. DSL training should be updated at least every two years and their knowledge and skills refreshed at regular intervals but at least annually.
- Will have a secure working knowledge of SSCB procedures and understands the assessment process for providing early help and statutory intervention, including the local authority levels of need criteria and referral arrangements.

- Will have a clear understanding of access and referral to the local early help offer and will support and advise members of staff where early help intervention is appropriate.
- Will understand and support the school delivery with regards to the requirements of the Prevent duty and provide advice and guidance to staff on protecting children from radicalisation.
- Will liaise with school staff (especially pastoral support, behaviour leads, school health colleagues and the SENDCO) on matters of safety and safeguarding and consult the SSCB Levels of Need document to inform decision making and liaison with relevant agencies.
- Will be alert to the specific needs of children in need, those with SEND and young carers.
- Will understand the risks associated with online activity and be confident that they have the up to date knowledge and capability to keep children safe whilst they are online at school; in particular, understand the additional risks that children with SEND face online and the associated and appropriate support they require.
- Will keep detailed, accurate records (either written or using appropriate secure online software), that include all concerns about a child even if there is no need to make an immediate referral and the rationale for decisions made and action taken.
- Will ensure that an indication of the existence of the additional child protection file is marked on the pupil school file record.
- Will ensure that when a pupil transfers school, their child protection file is passed to the new school as soon as possible, and within statutory timescales (separately from the main pupil file and ensuring secure transit) and that confirmation of receipt is received.
- Will ensure that where a pupil transfers school and is on a child protection plan or is a child looked after, their information is passed to the new school immediately and that the child's social worker is informed. In addition, consideration should be given to a multi-agency schools transition meeting if the case is complex or on-going.
- Will ensure that a copy of the Child Protection file is retained until such a time that the new school acknowledges receipt of the original file. A copy of the file will be retained if required according to our Privacy Policy.
- Will ensure that all appropriate staff members have a working knowledge and understanding of their role in case conferences, core groups and other multi-agency planning meetings, to ensure that they attend and are able to effectively contribute when required to do so. Where a report is required, this should be shared with the parents prior to the meeting.
- Will report to the Headmaster any significant issues for example, use of the [SSCB multi-agency escalation procedures](#), enquiries under section 47 of the Children Act 1989 and police investigations.
- Will ensure that the case holding Social Worker is informed of any child currently with a child protection plan who is absent without explanation.
- Will ensure that all staff sign to say they have read, understood and agree to work within the School's child protection policy, staff behaviour policy (code of conduct) and Keeping Children Safe in Education (KCSIE) Part 1 and annex A and ensure that the policies are used effectively.

- Will organise child protection and safeguarding induction, regularly updated training and a minimum of annual updates (including online safety) for all school staff, keep a record of attendance and address any absences.
- Ensure that in collaboration with the school leadership and governors, the child protection policy is reviewed annually and the procedures and implementation are updated and reviewed regularly.
- Ensure that the Child Protection Policy is available publicly and that parents are aware that referrals about suspected harm and abuse will be made and the role of the school in this.
- Establish and maintain links with the three safeguarding partners to make sure staff are aware of training opportunities and the latest policies on local safeguarding arrangements.
- Will contribute to and provide, with the Headmaster and Chair of Governors, the “Audit of Statutory Duties and Associated Responsibilities” to be submitted annually to the Surrey County Council, Education Safeguarding Team.
- Will ensure that the name of the designated members of staff for Child Protection, the Designated Safeguarding Lead and deputies, are clearly advertised in the school, with a statement explaining the school’s role in referring and monitoring cases of suspected abuse.
- Meet all other responsibilities as set out for DSLs in Keeping Children Safe in Education 2020.

The Deputy Designated Safeguarding Lead(s):

In addition to the role and responsibilities of all staff the Deputy DSL will:

- Be trained to the same standard as the Designated Safeguarding Lead and the role is explicit in their job description.
- Provide support and capacity to the DSL in carrying out delegated activities of the DSL; however, the lead responsibility of the DSL cannot be delegated.
- In the absence of the DSL, carries out the activities necessary to ensure the ongoing safety and protection of children. In the event of the long-term absence of the DSL the deputy will assume all of the functions above.

All members of The Governing Body understand and fulfil their responsibilities to ensure that:

- The school has effective safeguarding policies and procedures including a Child Protection Policy, a Staff Behaviour Policy or Code of Conduct, a Behaviour Policy (Including guidance on the use of restraint) and a response to children who go missing from education. Ensure policies are consistent with Surrey Safeguarding Children’s Board (SSCB) and statutory requirements, are reviewed annually and that the Child Protection policy is available on the school website.
- The SSCB is informed in line with local requirements about the discharge of duties via the annual safeguarding audit.
- That the school operates a safer recruitment procedure that includes statutory checks on staff suitability to work with children and by ensuring that there is at least one person on every recruitment panel who has completed safer recruitment

training. If there is not a panel conducting interviews then the individual will have completed the safer recruitment training.

- Staff regularly complete a self-declaration regarding disqualification on the grounds outlined in Disqualification under the childcare Act 2006.
- That at least one member of the governing body has completed safer recruitment training to be repeated every five years.
- Staff have been trained appropriately and this is updated in line with guidance and all staff have read Keeping Children Safe in Education (2020) part 1 and Annex A and that mechanisms are in place to assist staff in understanding and discharging their roles and responsibilities as set out in the guidance.
- That all staff including temporary staff and volunteers are provided with the school's child protection policy and staff behaviour policy.
- That the school has procedures for dealing with allegations of abuse against staff (including the Headmaster), volunteers and against other children and that a referral is made to the DBS and/or the Teaching Regulation Agency (as applicable) if a person in regulated activity has been dismissed or removed due to safeguarding concerns, or would have done had they not resigned.
- That a nominated governor for safeguarding is identified. The safeguarding governor liaises between the DSL and FGB meeting at least once a term, receives safeguarding minutes from meetings and will be informed of any serious safeguarding issues as they occur.
- That a member of the senior leadership team has been appointed by the Governing Body as the Designated Safeguarding Lead (DSL) who will take lead responsibility for safeguarding and child protection and that the role is explicit in the role holder's job description.
- That on appointment, the DSL and deputy(deputies) undertake interagency training (SSCB Modules 1&2) and also undertake DSL 'New to Role' and 'Update' training every two years.
- That children are taught about safeguarding (including online safety) as part of a broad and balanced curriculum covering relevant issues through personal, social, health and economic education (PSHE) and relationship and sex education (RSE).
- That the school will comply with DfE and Surrey County Council [Children Missing Education](#) requirements.
- That the school will comply with regular data returns requested by the Local Authority, regarding all pupils, of statutory school age, attending alternative provision and/or on a reduced or modified timetable
- That appropriate online filtering and monitoring systems are in place.
- Enhanced DBS checks (without barred list checks, unless the governor is also a volunteer at the school) are in place for all Governors.
- That any weaknesses in Safeguarding are remedied immediately.

Confidentiality and Sharing Information

All matters relating to child protection will be treated as confidential and only shared as per the ['Information Sharing Advice for Practitioners' \(DfE 2015\) guidance](#).

Information will be shared with staff within the school who 'need to know'.

All staff must be aware that they have a professional responsibility to share information with other agencies in order to safeguard children and that the Data Protection Act 1998 and General Data Protection Regulations are not a barrier to sharing information where a failure to do so would place a child at risk of harm. There is a lawful basis for child protection concerns to be shared with agencies who have a statutory duty for child protection.

All staff must be aware that they cannot promise a child to keep secrets which might compromise the child's safety or wellbeing. However, staff are aware that matters relating to child protection and safeguarding are personal to children and families, in this respect they are confidential and the Headmaster or DSLs will only disclose information about a child to other members of staff on a need to know basis.

All staff will always undertake to share our intention to refer a child to Social Care with their parents /carers unless to do so could put the child at greater risk of harm, or impede a criminal investigation.

Child Protection Procedures

The following procedures apply to all staff working in the school and will be covered by training to enable staff to understand their role and responsibility.

The aim of our procedures is to provide a robust framework which enables staff to take appropriate action when they are concerned that a child is being harmed or abused or is at risk of harm or abuse.

The prime concern at all stages must be the interests and safety of the child. Where there is a conflict of interest between the child and an adult, the interests of the child must be paramount.

All staff are aware that very young children and those with disabilities, special needs or with language delay may be more likely to communicate concerns with behaviours rather than words. Additionally, staff will question the cause of knocks and bumps in children who have limited mobility.

If a member of staff suspects abuse, spots signs or indicators of abuse, or they have a disclosure of abuse made to them they must:

1. Make an initial record of the information related to the concern.
2. Report it to the DSL immediately.
3. The DSL will consider if there is a requirement for immediate medical intervention, however urgent medical attention should not be delayed if the DSL is not immediately available.
4. Make an accurate record (which may be used in any subsequent court proceedings) as soon as possible and within 24 hours of the occurrence, of all that has happened, including details of:

Dates and times of their observations

- Dates and times of any discussions in which they were involved.
- Any injuries
- Explanations given by the child / adult
- Rationale for decision making and action taken
- Any actual words or phrases used by the child
- 5. The records must be signed and dated by the author or / equivalent on electronic based records
- 6. In the absence of the DSL or their Deputy, staff must be prepared to refer directly to SPA (and the police if appropriate) if there is the potential for immediate significant harm

Following a report of concerns the DSL must:

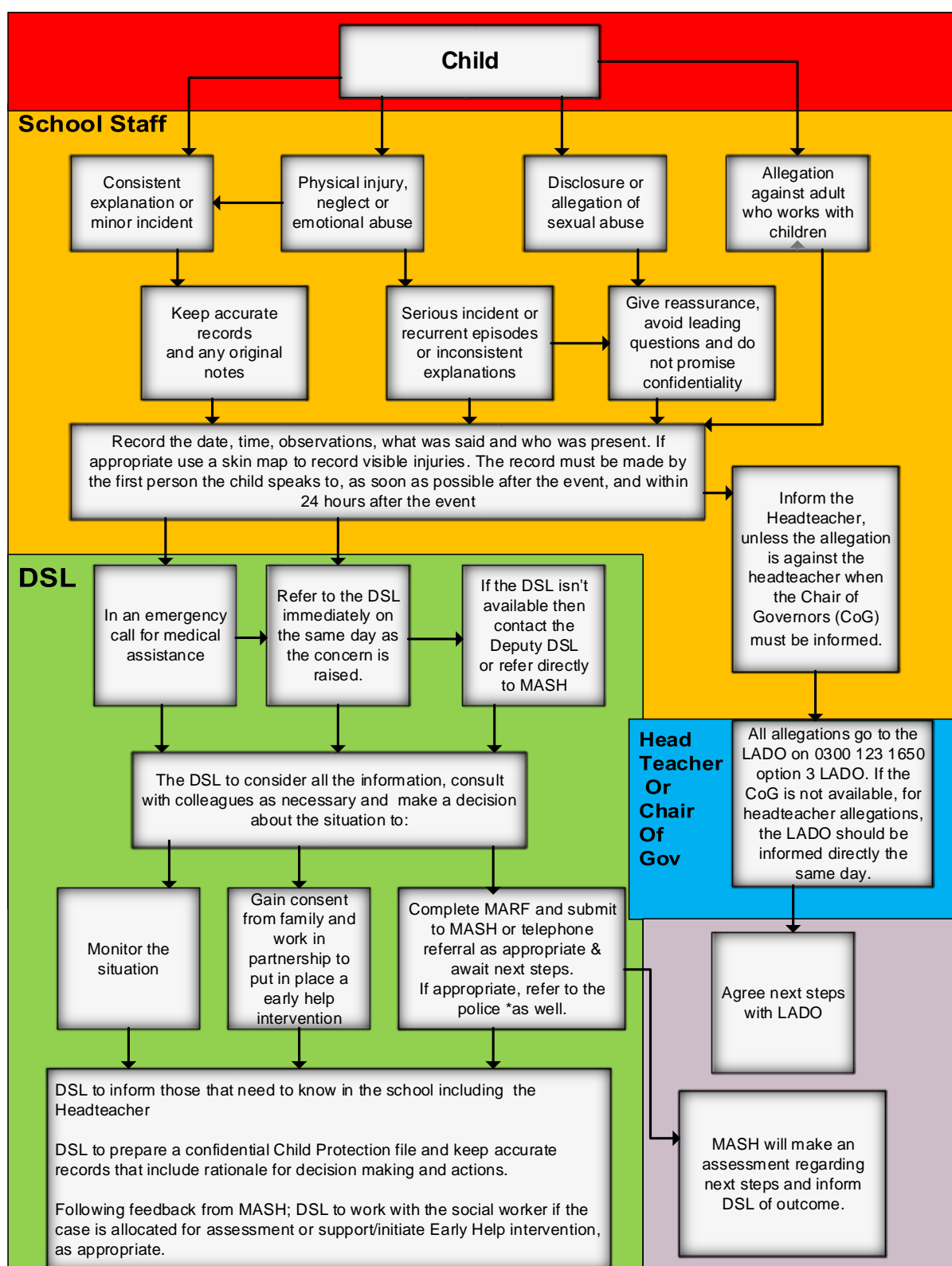
1. [Use the SSCB Levels of Need](#), to decide whether or not there are sufficient grounds for suspecting significant harm, in which case a referral must be made to the SPA and the police if it is appropriate.
2. Normally the school should try to discuss any concerns about a child's welfare with the family and where possible to seek their agreement before making a referral to the SPA. However, this should only be done when it will not place the child at increased risk or could impact a police investigation. The child's views should also be taken into account.

If there are grounds to suspect a child is suffering, or is likely to suffer, significant harm or abuse the DSL must contact the SPA. By sending a [Multi-Agency Referral Form \(MARF\)](#) by email to: cspa@surreycc.gov.uk or contact the SPA on 0300 470 9100. If a child is in immediate danger and urgent protective action is required, the Police (dial 999) must be called. The DSL must also notify SPA of the occurrence and what action has been taken.

3. If the DSL feels unsure about whether a referral is necessary, they can phone the SPA to discuss concerns.
4. If there is not a risk of significant harm, the DSL will either actively monitor the situation or consider the Early Help.
5. Where there are doubts or reservations about involving the child's family, the DSL should clarify with the SPA or the police whether the parents should be told about the referral and, if so, when and by whom. This is important in cases where the police may need to conduct a criminal investigation.
6. When a pupil is in need of urgent medical attention and there is suspicion of abuse the DSL or their Deputy should take the child to the accident and emergency unit at the nearest hospital, having first notified the SPA. The DSL should seek advice about what action the SPA will take and about informing the parents, remembering that parents should normally be informed that a child requires urgent hospital attention.

7. The exception to this process will be in those cases of known FGM where there is a mandatory requirement for the teacher to report directly to the police. The DSL should also be made aware.

Child Protection Procedures Flowchart



** In the cases of known FGM, the teacher who was made aware will also make contact with the police*

Dealing with disclosures

All staff

A member of staff who is approached by a child should listen positively and try to reassure them. They cannot promise complete confidentiality and should explain that they may need to pass information to other professionals to help keep the child or other children safe. The degree of confidentiality should always be governed by the need to protect the child.

Additional consideration needs to be given to children with communication difficulties and those whose preferred language is not English. It is important to communicate with them in a way that is appropriate to their age, understanding and preference.

All staff should know who the DSL is and who to approach if the DSL is unavailable. All staff have the right to make a referral to the SPA or Police directly and should do this if, for whatever reason, there are difficulties following the agreed protocol, for example, they are the only adult on the school premises at the time and have concerns about sending a child home.

Guiding principles, the seven R's

Receive

- Listen to what is being said, without displaying shock or disbelief
- Accept what is said and take it seriously
- Make a note of what has been said as soon as practicable

Reassure

- Reassure the pupil, but only so far as is honest and reliable
- Don't make promises you may not be able to keep e.g. 'I'll stay with you' or 'everything will be alright now' or 'I'll keep this confidential'
- Do reassure, for example, you could say: 'I believe you', 'I am glad you came to me', 'I am sorry this has happened', 'We are going to do something together to get help'

Respond

- Respond to the pupil only as far as is necessary for you to establish whether or not you need to refer this matter, but do not interrogate for full details
- Do not ask 'leading' questions i.e. 'did he touch your private parts?' or 'did she hurt you?' Such questions may invalidate your evidence (and the child's) in any later prosecution in court
- Do not ask the child why something has happened.
- Do not criticize the alleged perpetrator; the pupil may care about him/her, and reconciliation may be possible
- Do not ask the pupil to repeat it all for another member of staff. Explain what you have to do next and whom you have to talk to. Reassure the pupil that it will be a senior member of staff

Report

- Share concerns with the DSL immediately.
- If you are not able to contact your DSL or the Deputy DSL, and the child is at risk of immediate harm, contact the SPA or Police, as appropriate directly

- If you are dissatisfied with the level of response you receive following your concerns, you should press for re-consideration

Record

- If possible make some very brief notes at the time, and write them up as soon as possible
- Keep your original notes on file
- Record the date, time, place, persons present and noticeable nonverbal behaviour, and the words used by the child. If the child uses sexual 'pet' words, record the actual words used, rather than translating them into 'proper' words
- If appropriate, complete a body map to indicate the position of any noticeable bruising
- Record facts and observable things, rather than your 'interpretations' or 'assumptions'

Remember

- Support the child: listen, reassure, and be available
- Complete confidentiality is essential. Share your knowledge only with appropriate professional colleagues
- Get some support for yourself if you need it

Review (led by DSL)

- Has the action taken provided good outcomes for the child?
- Did the procedure work?
- Were any deficiencies or weaknesses identified in the procedure? Have these been remedied?
- Is further training required?

What happens next?

It is important that concerns are followed up and it is everyone's responsibility to ensure that they are. The member of staff should be informed by the DSL what has happened following a report being made. If they do not receive this information they should seek it out.

If they have concerns that the disclosure has not been acted upon appropriately they might inform the Headmaster or Safeguarding Governor of the school and/or may contact the SPA.

Receiving a disclosure can be upsetting for the member of staff and schools should have a procedure for supporting them after the disclosure. This might include reassurance that they have followed procedure correctly and that their swift actions will enable the allegations to be handled appropriately.

In some cases, additional counselling might be needed and staff should be encouraged to recognise that disclosures can have an impact on their own emotions.

Allegations against adults who work with children

Procedure

This procedure should be used in all cases in which it is alleged a member of staff or volunteer in a school, or another adult who works with children has:

- *behaved in a way that has harmed a child, or may have harmed a child;*
- *possibly committed a criminal offence against or related to a child; or*
- *behaved towards a child or children in a way that indicates he or she would pose a risk of harm to children*

In dealing with allegations or concerns against an adult, staff must:

- Report any concerns about the conduct of any member of staff or volunteer to the Headmaster immediately.
- If an allegation is made against the Headmaster, the concerns need to be raised with the Chair of Governors as soon as possible. If the Chair of Governors is not available, then the LADO should be contacted directly. This must be done without informing the Headmaster first.
- There may be situations when the Headmaster or Chair of Governors will want to involve the police immediately if the person is deemed to be an immediate risk to children or there is evidence of a possible criminal offence.
- Once an allegation has been received by the Headmaster or Chair of Governors they will contact the LADO on 0300 123 1650 option 3 *LADO*
Email: LADO@surreycc.gov.uk immediately and before taking any action or investigation.
- Following consultation with the LADO inform the parents of the allegation unless there is a good reason not to

In liaison with the LADO, the school will determine how to proceed and if necessary the LADO will refer the matter to Children's Social Care and/or the police.

If the matter is investigated internally, the LADO will advise the school to seek guidance from local authority colleagues in following procedures set out in part 4 of 'Keeping Children Safe in Education' (2021) and the SSCB procedures.

What is child abuse?

The following definitions are taken from *Working Together to Safeguard Children* HM Government (2018). In addition to these definitions, it should be understood that children can also be abused by being sexually exploited, honour based violence, forced marriage or female genital mutilation. To support the local context, all staff have access to the [Surrey Safeguarding Children's Board Levels of Need Threshold Document](#).

What is abuse and neglect?

Abuse and neglect are forms of maltreatment of a child. Somebody may abuse or neglect a child by inflicting harm, or by failing to act to prevent harm. Children may be abused in a family or in an institutional or community setting, by those known to them or, more rarely, by a stranger. Abuse can take place wholly online, or technology may be used to facilitate offline abuse. They may be abused by an adult or adults, or another child or children.

Physical abuse

Physical abuse may involve hitting, shaking, throwing, poisoning, burning or scalding, drowning, suffocating, or otherwise causing physical harm to a child. Physical harm may also be caused when a parent or carer fabricates the symptoms of, or deliberately induces, illness in a child.

Emotional abuse

The persistent emotional maltreatment of a child such as to cause severe and persistent adverse effects on the child's emotional development.

It may involve conveying to a child that they are worthless or unloved, inadequate, or valued only insofar as they meet the needs of another person. It may include not giving the child opportunities to express their views, deliberately silencing them or 'making fun' of what they say or how they communicate. It may feature age or developmentally inappropriate expectations being imposed on children.

These may include interactions that are beyond a child's developmental capability, as well as overprotection and limitation of exploration and learning, or preventing the child participating in normal social interaction. It may involve seeing or hearing the ill-treatment of another.

It may involve serious bullying (including cyber bullying), causing children frequently to feel frightened or in danger, or the exploitation or corruption of children. Some level of emotional abuse is involved in all types of maltreatment of a child, although it may occur in isolation.

Sexual abuse

Involves forcing or enticing a child or young person to take part in sexual activities, not necessarily involving a high level of violence, whether or not the child is aware of what is happening.

The activities may involve physical contact, including assault by penetration (for example, rape or oral sex) or non-penetrative acts such as masturbation, kissing, rubbing and touching outside of clothing. They may also include non-contact activities, such as involving children in looking at, or in the production of, sexual images, watching sexual activities, encouraging children to behave in sexually inappropriate ways, or grooming a child in preparation for abuse (including online).

Sexual abuse is not solely perpetrated by adult males. Women can also commit acts of sexual abuse, as can other children.

Neglect

Neglect is the persistent failure to meet a child's basic physical and/or psychological needs, likely to result in the serious impairment of the child's health or development.

Neglect may occur during pregnancy as a result of maternal substance abuse. Once a child is born, neglect may involve a parent or carer failing to:

- provide adequate food, clothing and shelter (including exclusion from home or abandonment)
- protect a child from physical and emotional harm or danger
- ensure adequate supervision (including the use of inadequate care-givers)
- ensure access to appropriate medical care or treatment

It may also include neglect of, or unresponsiveness to, a child's basic emotional needs.

[The SSCB Neglect Strategy](#) is available to provide more detailed information regarding neglect.

Indicators of abuse

Neglect

The nature of neglect

Neglect is a lack of parental care but poverty and lack of information or adequate services can be contributory factors.

Far more children are registered to the category of neglect on Child in Need and Child Protection plans than to the other categories. As with abuse, the number of children experiencing neglect is likely to be much higher than the numbers on the plans.

Neglect can include parents or carers failing to:

- provide adequate food, clothing and shelter
- protect a child from physical and emotional harm or danger
- ensure adequate supervision or stimulation
- ensure access to appropriate medical care or treatment

NSPCC research has highlighted the following examples of the neglect of children under 12 years old:

- frequently going hungry
- frequently having to go to school in dirty clothes
- regularly having to look after themselves because of parents being away or having problems such as drug or alcohol misuse
- being abandoned or deserted
- living at home in dangerous physical conditions
- not being taken to the doctor when ill
- not receiving dental care.

Neglect is a difficult form of abuse to recognise and is often seen as less serious than other categories. It is, however, very damaging: children who are neglected often develop more slowly than others and may find it hard to make friends and fit in with their peer group.

Neglect is often noticed at a stage when it does not pose a risk to the child. The duty to safeguard and promote the welfare of children (*What to do if You're Worried a Child is Being Abused* DfE 2015) would suggest that an appropriate intervention or conversation at this early stage can address the issue and prevent a child continuing to suffer until it reaches a point when they are at risk of harm or in significant need.

Neglect is often linked to other forms of abuse, so any concerns school staff should be discussed with the DSL.

Indicators of neglect

The following is a summary of some of the indicators that may suggest a child is being abused or is at risk of harm.

It is important to recognise that indicators alone cannot confirm whether a child is being abused. Each child should be seen in the context of their family and wider community and a proper assessment carried out by appropriate persons. What is important to keep in mind is that if you feel unsure or concerned, do something about it. Don't keep it to yourself. The [Neglect Risk Assessment Tool](#) provides staff with a resource to identify and act on concerns regarding neglect.

Physical indicators of neglect

- Constant hunger and stealing food
- Poor personal hygiene - unkempt, dirty or smelly
- Underweight
- Dress unsuitable for weather
- Poor state of clothing
- Illness or injury untreated

Behavioural indicators of neglect

- Constant tiredness
- Frequent absence from school or lateness
- Missing medical appointments
- Isolated among peers
- Frequently unsupervised
- Stealing or scavenging, especially food
- Destructive tendencies

Emotional abuse

The nature of emotional abuse

Most harm is produced in *low warmth, high criticism* homes, not from single incidents.

Emotional abuse is difficult to define, identify/recognise and/or prove.

Emotional abuse is chronic and cumulative and has a long-term impact.

All kinds of abuse and neglect have emotional effects although emotional abuse can occur by itself.

Children can be harmed by witnessing someone harming another person – as in domestic abuse.

It is sometimes possible to spot emotionally abusive behaviour from parents and carers to their children, by the way that the adults are speaking to, or behaving towards children. An appropriate challenge or intervention could affect positive change and prevent more intensive work being carried out later on.

Indicators of emotional abuse

Developmental issues

- Delays in physical, mental and emotional development
- Poor school performance
- Speech disorders, particularly sudden disorders or changes.

Behaviour

- Acceptance of punishment which appears excessive
- Over-reaction to mistakes
- Continual self-deprecation (I'm stupid, ugly, worthless etc.)
- Neurotic behaviour (such as rocking, hair-twisting, thumb-sucking)
- Self-mutilation
- Suicide attempts
- Drug/solvent abuse
- Running away
- Compulsive stealing, scavenging
- Acting out
- Poor trust in significant adults
- Regressive behaviour – e.g., wetting
- Eating disorders
- Destructive tendencies
- Neurotic behaviour
- Arriving early at school, leaving late

Social issues

- Withdrawal from physical contact
- Withdrawal from social interaction
- Over-compliant behaviour
- Insecure, clinging behaviour
- Poor social relationships

Emotional responses

- Extreme fear of new situations
- Inappropriate emotional responses to painful situations (“I deserve this”)
- Fear of parents being contacted
- Self-disgust
- Low self-esteem
- Unusually fearful with adults
- Lack of concentration, restlessness, aimlessness
- Extremes of passivity or aggression

Physical abuse

The nature of physical abuse

Most children collect cuts and bruises quite routinely as part of the rough and tumble of daily life. Clearly, it is not necessary to be concerned about most of these minor injuries. But accidental injuries normally occur on the *bony prominences* – e.g. knees, shins.

Injuries on the *soft* areas of the body are more likely to be inflicted intentionally and should therefore make us more alert to other concerning factors that may be present.

A body map can assist in the clear recording and reporting of physical abuse. The body map should only be used to record observed injuries and no child should be asked to remove clothing by a member of staff of the school.

Indicators of physical abuse / factors that should increase concern

- Multiple bruising or bruises and scratches (especially on the head and face)
- Clusters of bruises – e.g., fingertip bruising (caused by being grasped)
- Bruises around the neck and behind the ears – the most common abusive injuries are to the head
- Bruises on the back, chest, buttocks, or on the inside of the thighs
- Marks indicating injury by an instrument – e.g., linear bruising (stick), parallel bruising (belt), marks of a buckle
- Bite marks
- Deliberate burning may also be indicated by the pattern of an instrument or object – e.g., electric fire, cooker, cigarette
- Scalds with upward splash marks or *tide marks*
- Untreated injuries
- Recurrent injuries or burns
- Bald patches.

In the context of the school, it is normal to ask about a noticeable injury. The response to such an enquiry is generally light-hearted and detailed. So, most of all, concern should be increased when:

- the explanation given does not match the injury
- the explanation uses words or phrases that do not match the vocabulary of the child (adult's words)
- no explanation is forthcoming
- the child (or the parent/carer) is secretive or evasive
- the injury is accompanied by allegations of abuse or assault

You should be concerned if a child:

- is reluctant to have parents/carers contacted
- runs away or shows fear of going home

- is aggressive towards themselves or others
- flinches when approached or touched
- is reluctant to undress to change clothing for sport
- wears long sleeves during hot weather
- is unnaturally compliant in the presence of parents/carers.
- has a fear of medical help or attention
- admits to a punishment that appears excessive.

Sexual abuse

The nature of sexual abuse

Sexual abuse is often perpetrated by people who are known and trusted by the child – e.g., relatives, family friends, neighbours, babysitters, and people working with the child in school, faith settings, clubs or activities. Children can also be subject to child sexual exploitation.

Sexual exploitation is seen as a separate category of sexual abuse. The [SSCB Screening Tool and guidance](#) provides school staff with information regarding indicators of CSE (further information about CSE is available on pages 43-44).

Characteristics of child sexual abuse:

- it is often planned and systematic – people do not sexually abuse children by accident, though sexual abuse can be opportunistic
- grooming the child – people who abuse children take care to choose a vulnerable child and often spend time making them dependent (this may occur online)
- grooming the child's environment – abusers try to ensure that potential adult protectors (parents and other carers especially) are not suspicious of their motives.

Most people who sexually abuse children are men, but some women sexually abuse too.

Indicators of sexual abuse

Physical observations:

- Damage to genitalia, anus or mouth
- Sexually transmitted diseases
- Unexpected pregnancy, especially in very young girls
- Soreness in genital area, anus or mouth and other medical problems such as chronic itching
- Unexplained recurrent urinary tract infections and discharges or abdominal pain

Behavioural observations:

- Sexual knowledge inappropriate for age
- Sexualised behaviour or affection inappropriate for age
- Sexually inappropriate behaviour
- Hinting at sexual activity
- Inexplicable decline in education progress
- Depression or other sudden apparent changes in personality as becoming insecure
- Lack of concentration, restlessness, aimlessness
- Socially isolated or withdrawn
- Overly-compliant behaviour
- Acting out, aggressive behaviour
- Poor trust or fear concerning significant adults
- Regressive behaviour,
- Onset of wetting, by day or night; nightmares

- Arriving early at school, leaving late, running away from home
- Suicide attempts, self-mutilation,
- Suddenly drawing sexually explicit pictures
- Eating disorders or sudden loss of appetite or compulsive eating
- Regressing to younger behaviour patterns such as thumb sucking or bringing out discarded cuddly toys
- Become worried about clothing being removed
- Trying to be 'ultra-good' or perfect; overreacting to criticism.

Sexual violence and sexual harassment between children in schools

Peer on Peer Abuse

Context

We recognise that children can abuse other children-referred to as peer-on-peer abuse. This is most likely to include but may not be limited to:

- Bullying (including Cyber-bullying)
- Physical abuse (such as hitting, kicking, shaking, biting, hair-pulling or otherwise causing physical harm)
- Sexual violence (such as rape, assault by penetration, and sexual assault)
- Sexual harassment such as sexual comments, remarks, jokes and online sexual harassment which may be stand alone or part of a broader pattern of abuse.
- Upskirting, which typically involves taking a picture under a person's clothing without them knowing, with the intention of viewing the genitals or buttocks to obtain sexual gratification or cause the victim humiliation, distress or alarm.
- Sexting (also known as youth produced sexual imagery)
- Initiation/hazing type violence and rituals.

Sexual violence and sexual harassment can occur between two children of any age and sex. It can also occur through a group of children sexually assaulting or sexually harassing a single child or group of children.

Children who are victims of sexual violence and sexual harassment will likely find the experience stressful and distressing. This will, in all likelihood, adversely affect their education attainment as well as their emotional well-being. Sexual violence and sexual harassment exist on a continuum and may overlap; they can occur online and offline (both physically and verbally) and are never acceptable. It is important that all victims are taken seriously and offered appropriate support.

Reports of sexual violence and sexual harassment are extremely complex to manage. It is essential that victims are protected, offered appropriate support and every effort is made to ensure their education is not disrupted. It is also important that other children, adult students and school and college staff are supported and protected as appropriate.

Policy

We believe that all children have a right to attend school and learn in a safe environment. Children should be free from harm by adults and other children in school

We recognise that children are capable of abusing their peers and this will be dealt with under our child protection policy and in line with KCSiE (2021)

We are clear that sexual violence and sexual harassment is not acceptable, will never be tolerated and is not an inevitable part of growing up.

We will minimise the risk of peer on peer abuse by: -

Prevention

- Taking a whole school approach to safeguarding & child protection
- Providing training to staff
- Providing a clear set of values and standards, underpinned by the school's behaviour policy and pastoral support; and by a planned programme of evidence based content delivered through the curriculum.
- Recognising that there is no place for 'banter' or dismissing behaviour as 'boys will be boys'
- Engaging with specialist support and interventions

Responding to and managing reports of sexual violence and sexual harassment

Children making a report of sexual violence or sexual harassment will be reassured that they are being taken seriously, will be kept safe and be well supported.

Children who report abuse should never be given the impression that they are creating a problem by reporting abuse, sexual violence or sexual harassment.

If the report includes an online element staff will be mindful of the Searching, Screening and Confiscation: advice for schools (DfE 2018) guidance. Along with our guidance on how to receive a disclosure (don't promise confidentiality, listen, be non-judgemental, don't lead, take notes, report to DSL etc.) it is imperative that staff should not view, copy or forward illegal images of a child.

Staff taking the report will inform the DSL or the Deputy DSL immediately.

Staff taking a report will never promise confidentiality.

Parents or carers should usually be informed (unless this would put the child at greater risk).

If a child is at risk of harm, is in immediate danger, or has been harmed, a referral (MARF) will be made to the SPA email: cspa@surreycc.gov.uk or telephone 0300 470 9100, as appropriate.

Risk Assessment: -

Following a report, the DSL will make an immediate risk and needs assessment on a case-by-case basis.

The Risk assessment will consider;

- The victim, especially their protection and support.
- The alleged perpetrator, their support needs and any disciplinary action.

- All other children at the school.
- The victim and the alleged perpetrator sharing classes and space at school.

The risk assessment will be recorded and kept under review.

Where there has been other professional intervention and/or other specialist risk assessments, these professional assessments will be used to inform the school's approach to supporting and protecting pupils.

Support regarding risk assessments can be accessed from the [Education Safeguarding Team](mailto:education.safeguarding@surreycc.gov.uk) – education.safeguarding@surreycc.gov.uk

Action: The DSL will consider: -

- The wishes of the victim.
- The nature of the incident including the harm caused and whether a crime has been committed.
- Ages of the children involved.
- Developmental stages of the children.
- Any power imbalance between the children.
- Any previous incidents.
- Ongoing risks.
- Other related issues or wider context.

Options: The DSL decision making regarding the issue with the following possible options:

- Manage internally
- Early Help intervention
- Refer to SPA
- Report to the police (generally in parallel with a referral to SPA)

Ongoing Response:

The DSL will manage each case individually and will ensure the risk assessment is reviewed regularly with relevant partner agencies, for example the Police and Children's Social Care.

Where there is a criminal investigation into a rape, assault by penetration or sexual assault, the alleged perpetrator should be removed from any classes they share with the victim.

The DSL will consider how best to keep the victim and perpetrator a reasonable distance apart on school premises and on transport where appropriate.

Where a criminal investigation into a rape or assault by penetration leads to a conviction or caution, the school will take suitable action. In all but the most exceptional of circumstances, the rape or assault is likely to constitute a serious breach of discipline and may lead to the view that allowing the perpetrator to remain in the same school or college would seriously harm the education or welfare of the victim (and potentially themselves and other pupils).

Where a criminal investigation into sexual assault leads to a conviction or caution, the school or college will, if it has not already, consider any suitable sanctions in light of their behaviour policy, which may include consideration of permanent exclusion. Where the perpetrator is going to remain at the school or college, the Headmaster should continue keeping the victim and perpetrator in separate classes and continue to consider the most appropriate way to manage potential contact on school and college premises and transport. The nature of the conviction or caution and wishes of the victim will be especially important in determining how to proceed in such cases.

The victim, alleged perpetrator and any other affected children & adults will receive appropriate support and safeguards on a case-by-case basis.

The school will take any disciplinary action against the alleged perpetrator in accordance with the school behaviour policy.

The school recognises that taking disciplinary action and providing appropriate support are not mutually exclusive actions and will occur at the same time if necessary.

Physical Abuse

While a clear focus of peer on peer abuse is around sexual abuse and harassment, physical assaults and initiation violence and rituals from pupils to pupils are also abusive.

These are equally not tolerated and if it is believed that a crime has been committed, will be reported to the police.

The principles from the anti-bullying policy will be applied in these cases, with recognition that any police investigation will need to take priority.

References:

DfE Keeping Children Safe in Education 2021

[*DfE Sexual Violence and Sexual Harassment between Children in Schools and Colleges May 2018*](#)

Harmful Sexual Behaviour

The [Brook Traffic Light Tool](#) uses a traffic light system to categorise the sexual behaviours of young people and is designed to help professionals:

- Make decisions about safeguarding children and young people
- Assess and respond appropriately to sexual behaviour in children and young people
- Understand healthy sexual development and distinguish it from harmful behaviour
- By categorising sexual behaviours, school can work with other agencies to the same standardised criteria when making decisions and can protect children and young people with a multi-agency approach.

The school recognise that it is vital that professionals agree on how behaviours should be categorised regardless of culture, faith, beliefs, and their own experiences or values.

The school also recognises that the age group making up the pupil cohort does not primarily fall into the upper or lower Behaviours Tools given below, but believe that the disclosures about or from siblings, who are often on site, mean that staff should have clear guidelines for all children.

Brook sexual behaviours traffic light tool

Behaviours: age 0 to 5

All green, amber and red behaviours require some form of attention and response. It is the level of intervention that will vary.

What is a green behaviour?

Green behaviours reflect safe and healthy sexual development. They are displayed between children or young people of similar age or developmental ability. They are reflective of natural curiosity, experimentation, consensual activities and positive choices

What can you do?

Green behaviours provide opportunities to give positive feedback and additional information.

Green behaviours

- holding or playing with own genitals
- attempting to touch or curiosity about other children's genitals
- attempting to touch or curiosity about breasts, bottoms or genitals of adults
- games e.g. mummies and daddies, doctors and nurses
- enjoying nakedness
- interest in body parts and what they do
- curiosity about the differences between boys and girls

What is an amber behaviour?

Amber behaviours have the potential to be outside of safe and healthy behaviour. They may be of potential concern due to age, or developmental differences. A potential concern due to activity type, frequency, duration or context in which they occur.

What can you do?

Amber behaviours signal the need to take notice and gather information to assess the appropriate action.

Amber behaviours

- preoccupation with adult sexual behaviour
- pulling other children's pants down/skirts up/trousers down against their will
- talking about sex using adult slang
- preoccupation with touching the genitals of other people
- following others into toilets or changing rooms to look at them or touch them
- talking about sexual activities seen on TV/online

What is a red behaviour?

Red behaviours are outside of safe and healthy behaviour. They may be excessive, secretive, compulsive, coercive, degrading or threatening and involving significant age, developmental, or power differences. They may pose a concern due to the activity type, frequency, duration or the context in which they occur

What can you do?

Red behaviours indicate a need for immediate intervention and action.

Red behaviours

- persistently touching the genitals of other children
- persistent attempts to touch the genitals of adults
- simulation of sexual activity in play
- sexual behaviour between young children involving penetration with objects
- forcing other children to engage in sexual play

This is intended to be used as a guide only. Please refer to the guidance tool at <https://www.brook.org.uk/our-work/the-sexual-behaviours-traffic-light-tool> for further information

Print date: 01/10/2015 - Brook has taken every care to ensure that the information contained in this publication is accurate and up-to-date at the time of being published. As information and knowledge is constantly changing, readers are strongly advised to use this information for up to one month from print date. Brook accepts no responsibility for difficulties that may arise as a result of an individual acting on the advice and recommendations it contains.

Brook sexual behaviours traffic light tool adapted from Family Planning Queensland. (2012). Traffic Lights guide to sexual behaviours. Brisbane: Family Planning Queensland, Australia.

Behaviours: age 5 to 9 and 9 to 13

All green, amber and red behaviours require some form of attention and response. It is the level of intervention that will vary.

What is a green behaviour?

Green behaviours reflect safe and healthy sexual development. They are displayed between children or young people of similar age or developmental ability and reflective of natural curiosity, experimentation, consensual activities and positive choices

What can you do?

Green behaviours provide opportunities to give positive feedback and additional information.

Green behaviours 5-9

- feeling and touching own genitals
- curiosity about other children's genitals
- curiosity about sex and relationships, e.g. differences between boys and girls, how sex happens, where babies come from, same-sex relationships
- sense of privacy about bodies
- telling stories or asking questions using swear and slang words for parts of the body

Green behaviours 9-13

- solitary masturbation
- use of sexual language including swear and slang words
- having girl/boyfriends who are of the same, opposite or any gender
- interest in popular culture, e.g. fashion, music, media, online games, chatting online
- need for privacy
- consensual kissing, hugging, holding hands with peers

What is an amber behaviour?

Amber behaviours have the potential to be outside of safe and healthy behaviour. They may be of potential concern due to age, or developmental differences. A potential concern due to activity type, frequency, duration or context in which they occur.

What can you do?

Amber behaviours signal the need to take notice and gather information to assess the appropriate action.

Amber behaviours 5-9

- questions about sexual activity which persist or are repeated frequently, despite an answer having been given
- sexual bullying face to face or through texts or online messaging
- engaging in mutual masturbation
- persistent sexual images and ideas in talk, play and art
- use of adult slang language to discuss sex

Amber behaviours 9-13

- uncharacteristic and risk-related behaviour, e.g. sudden and/or provocative changes in dress, withdrawal from friends, mixing with new or older people, having more or less money than usual, going missing
- verbal, physical or cyber/virtual sexual bullying involving sexual aggression
- LGBT (lesbian, gay, bisexual, transgender) targeted bullying
- exhibitionism, e.g. flashing or mooning
- giving out contact details online
- viewing pornographic material
- worrying about being pregnant or having STIs

What is a red behaviour?

Red behaviours are outside of safe and healthy behaviour. They may be excessive, secretive, compulsive, coercive, degrading or threatening and involving significant age, developmental, or power differences. They may pose a concern due to the activity type, frequency, duration or the context in which they occur

What can you do?

Red behaviours indicate a need for immediate intervention and action.

Red behaviours 5-9

- frequent masturbation in front of others
- sexual behaviour engaging significantly younger or less able children
- forcing other children to take part in
- sexual activities
- simulation of oral or penetrative sex
- sourcing pornographic material online

Red behaviours 9-13

- exposing genitals or masturbating in public
- distributing naked or sexually provocative images of self or others
- sexually explicit talk with younger children
- sexual harassment
- arranging to meet with an online acquaintance in secret
- genital injury to self or others
- forcing other children of same age, younger or less able to take part in sexual activities
- sexual activity e.g. oral sex or intercourse
- presence of sexually transmitted infection (STI)
- evidence of pregnancy

This is intended to be used as a guide only. Please refer to the guidance tool at <https://www.brook.org.uk/our-work/the-sexual-behaviours-traffic-light-tool> for further information

Print date: 01/10/2015 - Brook has taken every care to ensure that the information contained in this publication is accurate and up-to-date at the time of being published. As information and knowledge is constantly changing, readers are strongly advised to use this information for up to one month from print date. Brook accepts no responsibility for difficulties that may arise as a result of an individual acting on the advice and recommendations it contains.

Brook sexual behaviours traffic light tool adapted from Family Planning Queensland. (2012). Traffic Lights guide to sexual behaviours. Brisbane: Family Planning Queensland, Australia.

Behaviours: age 13 to 17

All green, amber and red behaviours require some form of attention and response. It is the level of intervention that will vary.

What is a green behaviour?

Green behaviours reflect safe and healthy sexual development. They are displayed between children or young people of similar age or developmental ability and reflective of natural curiosity, experimentation, consensual activities and positive choices

What can you do?

Green behaviours provide opportunities to give positive feedback and additional information.

Green behaviours

- solitary masturbation
- sexually explicit conversations with peers
- obscenities and jokes within the current cultural norm
- interest in erotica/pornography
- use of internet/e-media to chat online
- having sexual or non-sexual relationships
- sexual activity including hugging, kissing, holding hands
- consenting oral and/or penetrative sex with others of the same or opposite gender who are of similar age and developmental ability
- choosing not to be sexually active

What is an amber behaviour?

Amber behaviours have the potential to be outside of safe and healthy behaviour. They may be of potential concern due to age, or developmental differences. A potential concern due to activity type, frequency, duration or context in which they occur.

What can you do?

Amber behaviours signal the need to take notice and gather information to assess the appropriate action.

Amber behaviours

- accessing exploitative or violent pornography
- uncharacteristic and risk-related behaviour, e.g. sudden and/or provocative changes in dress,
- withdrawal from friends, mixing with new or older people, having more or less money than usual, going missing
- concern about body image
- taking and sending naked or sexually provocative images of self or others
- single occurrence of peeping, exposing, mooning or obscene gestures
- giving out contact details online
- joining adult- only social networking sites and giving false personal information
- arranging a face to face meeting with an online contact alone

What is a red behaviour?

Red behaviours are outside of safe and healthy behaviour. They may be excessive, secretive, compulsive, coercive, degrading or threatening and involving significant age, developmental, or power differences. They may pose a concern due to the activity type, frequency, duration or the context in which they occur

What can you do?

Red behaviours indicate a need for immediate intervention and action.

Red behaviours

- exposing genitals or masturbating in public
- preoccupation with sex, which interferes with daily function
- sexual degradation/humiliation of self or others
- attempting/forcing others to expose genitals
- sexually aggressive/exploitative behaviour
- sexually explicit talk with younger children
- sexual harassment
- non-consensual sexual activity
- use of/acceptance of power and control in sexual relationships
- genital injury to self or others
- sexual contact with others where there is a big difference in age or ability
- sexual activity with someone in authority and in a position of trust
- sexual activity with family members
- involvement in sexual exploitation and/or trafficking
- sexual contact with animals
- receipt of gifts or money in exchange for sex

This is intended to be used as a guide only. Please refer to the guidance tool at <https://www.brook.org.uk/our-work/the-sexual-behaviours-traffic-light-tool> for further information

Print date: 01/10/2015 - Brook has taken every care to ensure that the information contained in this publication is accurate and up-to-date at the time of being published. As information and knowledge is constantly changing, readers are strongly advised to use this information for up to one month from print date. Brook accepts no responsibility for difficulties that may arise as a result of an individual acting on the advice and recommendations it contains.

Brook sexual behaviours traffic light tool adapted from Family Planning Queensland. (2012). Traffic Lights guide to sexual behaviours. Brisbane: Family Planning Queensland, Australia.

Mental health

The school has clear systems and processes for identifying possible mental health problems, including guidance on how and when to escalate as described in the [Healthcare and Pastoral Care, including Mental Health Policy](#). KCSIE links to further information and best practice guidance [Mental health and behaviour in schools](#), also [Promoting children and young people's emotional health and well-being](#): a whole school and college approach and lesson plans and materials ['Rise above'](#).

Anti-Bullying/Cyberbullying

Our school policy on anti-bullying is set out in a separate document and acknowledges that to allow or condone bullying may lead to consideration under child protection procedures. The [Surrey Anti Bullying Strategy and guidance](#) provides further resources for school staff.

We keep a record of known bullying incidents which is shared with, and analysed by the governing body. All staff are aware that children with SEND and/or differences/perceived differences are more susceptible to being bullied/victims of child abuse.

When there is 'reasonable cause to suspect that a child is suffering, or is likely to suffer, significant harm' a bullying incident should be addressed as a child protection concern. If the anti-bullying procedures are seen to be ineffective, the Headmaster and the DSL will also consider child protection procedures.

PHSE education regularly provides opportunities for children to understand bullying is wrong, its impact and how to deal with it.

Online Safety

The school has an online safety policy which explains how we try to keep pupils safe in school and how we respond to online safety incidents.

Children increasingly use electronic equipment on a daily basis to access the internet, share and view content and images via social media sites such as Facebook, twitter, Instagram, snapchat and voodoo and for online gaming.

Some adults and other children use these technologies to harm children. The harm might range from sending hurtful or abusive texts or emails, to grooming and enticing children to engage in extremist or sexual behaviour such as webcam photography or face-to-face meetings.

Pupils may also be distressed or harmed by accessing inappropriate material such as pornographic websites or those which promote extremist behaviour, criminal activity, suicide or eating disorders

Pupils are taught about online safety throughout the curriculum and all staff receive online safety training which is regularly updated. The school online safety co-ordinator is Ben Alexander.

Racist Incidents

Our policy on racist incidents is set out separately and acknowledges that repeated racist incidents or a single serious incident may lead to consideration under child protection procedures. We keep a record of racist incidents.

Radicalisation and Extremism

[The Prevent Duty for England and Wales \(2015\)](#) under section 26 of the Counter-Terrorism and Security Act 2015 places a duty on education and other children's services to have due regard to the need to prevent people from being drawn into terrorism.

Extremism is defined as 'as 'vocal or active opposition to fundamental British values, including democracy, the rule of law, individual liberty and mutual respect and tolerance of different faiths and beliefs'. We also include in our definition of extremism calls for the death of members of our armed forces, whether in this country or overseas.

Some children are at risk of being radicalised; adopting beliefs and engaging in activities which are harmful, criminal or dangerous. This can happen both online and offline.

The school is clear that exploitation of vulnerable children and radicalisation should be viewed as a safeguarding concern and follows the Department for Education guidance for schools and childcare providers on preventing children and young people from being drawn into terrorism.

The school seeks to protect children and young people against the messages of all violent extremism including, but not restricted to, those linked to Islamist ideology, or to Far Right / Neo Nazi / White Supremacist ideology, Irish Nationalist and Loyalist paramilitary groups, and extremist Animal Rights movements.

School staff receive training to help identify early signs of radicalisation and extremism.

Opportunities are provided in the curriculum to enable pupils to discuss issues of religion, ethnicity and culture and the school follows the [DfE advice Promoting Fundamental British Values as part of SMSC \(spiritual, moral, social and cultural education\) in Schools \(2014\)](#).

The school governors, the Headmaster and the Designated Safeguarding Lead (DSL) will assess the level of risk within the school and put actions in place to reduce that risk. Risk assessment may include, the use of school premises by external agencies, the anti-bullying policy and other issues specific to the school's profile, community and philosophy.

When any member of staff has concerns that a pupil may be at risk of radicalisation or involvement in terrorism, they should speak with the DSL. They should then follow the safeguarding procedures and refer cases to the SPA. If the matter is urgent then Police must be contacted by dialling 999. In non-urgent cases where police advice is sought then dial 101 and ask to speak to the Surrey Police Prevent Coordinator.

The Department of Education has also set up a dedicated telephone helpline for staff and governors to raise concerns around Prevent (020 7340 7264).

Indicators of vulnerability to radicalisation

Radicalisation refers to the process by which a person comes to support terrorism and forms of extremism leading to terrorism.

Extremism is defined by the Government in the Prevent Strategy as:

Vocal or active opposition to fundamental British values, including democracy, the rule of law, individual liberty and mutual respect and tolerance of different faiths and beliefs. We also include in our definition of extremism calls for the death of members of our armed forces, whether in this country or overseas.

Extremism is defined by the Crown Prosecution Service as:

- The demonstration of unacceptable behaviour by using any means or medium to express views which:
- Encourage, justify or glorify terrorist violence in furtherance of beliefs;
- Seek to provoke others to terrorist acts;
- Encourage other serious criminal activity or seek to provoke others to serious criminal acts; or
- Foster hatred which might lead to inter-community violence in the UK.

There is no such thing as a “typical extremist”: those who become involved in extremist actions come from a range of backgrounds and experiences, and most individuals, even those who hold radical views, do not become involved in violent extremist activity.

Pupils may become susceptible to radicalisation through a range of social, personal and environmental factors - it is known that violent extremists exploit vulnerabilities in individuals to drive a wedge between them and their families and communities. It is vital that school staff can recognise those vulnerabilities.

Indicators of vulnerability include:

- Identity Crisis – the student / pupil is distanced from their cultural / religious heritage and experiences discomfort about their place in society;
- Personal Crisis – the student / pupil may be experiencing family tensions; a sense of isolation; and low self-esteem; they may have dissociated from their existing friendship group and become involved with a new and different group of friends; they may be searching for answers to questions about identity, faith and belonging;
- Personal Circumstances – migration; local community tensions; and events affecting the student / pupil’s country or region of origin may contribute to a sense of grievance that is triggered by personal experience of racism or discrimination or aspects of Government policy;
- Unmet Aspirations – the student / pupil may have perceptions of injustice or a feeling of failure,
- Experiences of Criminality – which may include involvement with criminal groups, imprisonment, and poor resettlement / reintegration;
- Special Educational Needs and Disability – students / pupils may experience difficulties with social interaction, empathy with others, understanding the consequences of their actions and awareness of the motivations of others.

However, this list is not exhaustive, nor does it mean that all young people experiencing the above are at risk of radicalisation for the purposes of violent extremism.

More critical risk factors could include:

- Being in contact with extremist recruiters;
- Accessing violent extremist websites, especially those with a social networking element;
- Possessing or accessing violent extremist literature;
- Using extremist narratives and a global ideology to explain personal disadvantage;
- Justifying the use of violence to solve societal issues;
- Joining or seeking to join extremist organisations; and
- Significant changes to appearance and / or behaviour;

- Experiencing a high level of social isolation resulting in issues of identity crisis and / or personal crisis.

The Department of Education guidance [The Prevent Duty](#) can be accessed via this link.

Aldro visiting speaker risk assessment

Aldro takes seriously its responsibility to exclude those promoting extremist views that support or are conducive to terrorism. Outside speakers who are deemed to have extremist views will not be invited into the school.

Aldro has a robust system for assessing and rating risks associated with any planned events and visiting speakers, providing evidence to suggest whether an event should not proceed, be cancelled or whether mitigating action is required (for example a member of staff alerting the Headmaster to concerns in relation to a guest speaker).

All events and speakers are assessed and approved by the Senior Management Team (SMT), who may ask to see the content of speaker's materials prior to the event, including an outline of the topics to be discussed and sight of any presentations, footage to be broadcast etc. All visiting speakers will be supervised by a member of the staff, who are expected to interject or stop an event if they feel that the speaker is promoting extremist views or inequality in any form.

Outside speakers who are deemed to have extremist views will not be invited to Aldro. Staff are required to book events with sufficient notice to allow SMT to undertake checks and for cancellation to take place if necessary.

Domestic Abuse

Domestic abuse represents one quarter of all violent crime. It is actual or threatened physical, emotional, psychological or sexual abuse. It involves the use of power and control by one person over another. It occurs regardless of race, ethnicity, gender, class, sexuality, age, religion, mental or physical ability. Domestic abuse can also involve other types of abuse.

We use the term domestic abuse to reflect that a number of abusive and controlling behaviours are involved beyond violence. Slapping, punching, kicking, bruising, rape, ridicule, constant criticism, threats, manipulation, sleep deprivation, social isolation, and other controlling behaviours all count as abuse.

Living in a home where domestic abuse takes place is harmful to children and can have a serious impact on their behaviour, wellbeing and understanding of healthy, positive relationships. Children who witness domestic abuse are at risk of significant harm and staff are alert to the signs and symptoms of a child suffering or witnessing domestic abuse.

The school is enrolled onto the Operation Encompass scheme, a joint project between Surrey Police, Surrey County Council, Surrey Domestic Abuse Service and Surrey Schools; where every school day morning our DSL is notified of all domestic abuse incidents that have occurred and been reported to Police in the previous 24 hours which involved a child at this school (72 hours on a Monday morning). This provides an opportunity for us to ensure the right support is in place at the right time for children who are experiencing domestic abuse.

Child Exploitation (CSE)

Child sexual exploitation is a form of child sexual abuse.

It occurs where an individual or group takes advantage of an imbalance of power to coerce, manipulate or deceive a child or young person under the age of 18 into sexual activity (a) in exchange for something the victim needs or wants, and/or (b) for the financial advantage or increased status of the perpetrator or facilitator.

The victim may have been sexually exploited even if the sexual activity appears consensual.

Child sexual exploitation does not always involve physical contact; it can also occur through the use of technology. All staff are aware of the link between online safety and vulnerability to CSE.

Any concerns that a child is being or is at risk of being sexually exploited should be passed immediately to the DSL.

The School is aware there is a clear link between regular non-attendance at school and CSE. Staff will consider a child to be at potential CSE risk in the case of regular non-attendance at school and make reasonable enquiries with the child and parents to assess this risk.

The DSL will complete the Surrey Safeguarding Children's Board [CSE Screening Tool](#) alongside staff who know the child well on any occasion when there is a concern that a child is being or is at risk of being sexually exploited or where indicators have been observed that are consistent with a child who is being or who is at risk of being sexually exploited.

In all cases if the tool identifies any level of concern (green, amber or red) the DSL should contact the SPA and email the completed CSE Screening Tool along with a Multi-Agency Referral Form (MARF). If a child is in immediate danger the police should be called on 999.

The school is aware that a child often is not able to recognise the coercive nature of the abuse and does not see themselves as a victim. Consequently, the child may resent what they perceive as interference by staff. However, staff must act on their concerns as they would for any other type of abuse. Children also rarely self-report CSE so staff must be particularly vigilant to potential indicators of risk.

The school includes the risks of sexual exploitation in the PHSE and SRE curriculum. Pupils will be informed of the grooming process and how to protect themselves from people who may potentially be intent on causing harm. They will be supported in terms of recognising and assessing risk in relation to CSE, including online, and knowing how and where to get help.

Child Criminal Exploitation & Gangs

There are several areas in which young people are put at risk by gang activity, both through participation in, and as victims of, gang violence which can be in relation to their peers or to a gang-involved adult in their household.

A child who is affected by gang activity or serious youth violence may have suffered, or may be likely to suffer, significant harm through physical, sexual and emotional abuse or neglect.

The risk or potential risk of harm to the child may be as a victim, a gang member or both - in relation to their peers or to a gang-involved adult in their household. Teenagers can be particularly vulnerable to recruitment into gangs and involvement in gang violence. This vulnerability may be exacerbated by risk factors in an individual's background, including violence in the family, involvement of siblings in gangs, poor educational attainment, or poverty or mental health problems.

Criminal exploitation of children is a typical feature of county lines criminal activity. Key identifying features of involvement in county lines are when children are missing, when the victim may have been trafficked for transporting drugs, a referral to the National Referral Mechanism should be considered with Social Care and Police colleagues.

A child who is affected by gang activity, criminal exploitation or serious youth violence can be at risk of significant harm through physical, sexual and emotional abuse. Girls may be particularly at risk of sexual exploitation.

Serious violence

All staff should be aware of indicators, which may signal that children are at risk from, or are involved with serious violent crime. These may include increased absence from school, a change in friendships or relationships with older individuals or groups, a significant decline in performance, signs of self-harm or a significant change in well-being, or signs of assault or unexplained injuries. Unexplained gifts or new possessions could also indicate that children have been approached by or are involved with individuals associated with criminal networks or gangs.

All staff should be aware of the associated risks and understand the measures in place to manage these. Advice for schools and colleges is provided in the Home Office's <https://www.gov.uk/government/publications/advice-to-schools-and-colleges-on-gangs-and-youth-violence>.

Any concerns that a child is being or is at risk of being criminally exploited will be passed without delay to the DSL. The school is aware there is a clear link between regular non-attendance at school and exploitation. Staff will consider a child to be at potential risk in the case of regular non-attendance at school and make reasonable enquiries with the child and parents to assess this risk.

A referral to the SPA will be made when any concern of harm to a child as a consequence of gang activity including child criminal exploitation becomes known. Any member of staff who has concerns that a child may be at risk of harm should immediately inform the DSL. The DSL will contact the SPA. If there is concern about a child's immediate safety, the Police will be contacted on 999.

Sharing of nudes and semi-nudes

The practice of children sharing images and videos via text message, email, social media or mobile messaging apps has become commonplace. However, this online technology has also given children the opportunity to produce and distribute sexual imagery in the form of photos and videos. Such imagery involving anyone under the age of 18 is unlawful.

Sharing of nudes and semi-nudes refers to both images and videos where:

- A person under the age of 18 creates and shares sexual imagery of themselves with a peer under the age of 18.
- A person under the age of 18 shares sexual imagery created by another person under the age of 18 with a peer under the age of 18 or an adult.
- A person under the age of 18 is in possession of sexual imagery created by another person under the age of 18.

All incidents of this nature should be treated as a safeguarding concern and in line with the UKCIS guidance [Sharing nudes and semi-nudes: advice for education settings working with children and young people](#)

Cases where sexual imagery of people under 18 has been shared by adults and where sexual imagery of a person of any age has been shared by an adult to a child is child sexual abuse and should be responded to as per the relevant section of this policy.

If a member of staff becomes aware of an incident involving the sharing of nudes and semi-nudes, they should follow the child protection procedures and refer to the DSL immediately.

The member of staff should confiscate the device involved and set it to flight mode or, if this is not possible, turn it off. **Staff must never** view, copy, print, share, store or save the imagery – **This is illegal**.

Further guidance for staff can be found [here](#).

The DSL should hold an initial review meeting with appropriate school staff and subsequent interviews with the children involved (if appropriate).

Parents should be informed at an early stage and involved in the process unless there is reason to believe that involving parents would put the child at risk of harm.

At any point in the process if there is concern a young person has been harmed or is at risk of harm a referral should be made to the SPA or the Police as appropriate.

Immediate referral at the initial review stage should be made to Children's Social Care/Police if:

- The incident involves an adult.
- There is good reason to believe that a young person has been coerced, blackmailed or groomed or if there are concerns about their capacity to consent (for example, owing to special education needs).
- What you know about the imagery suggests the content depicts sexual acts which are unusual for the child's development stage or are violent.
- The imagery involves sexual acts.
- The imagery involves anyone aged 12 or under.
- There is reason to believe a child is at immediate risk of harm owing to the sharing of the imagery, for example the child is presenting as suicidal or self-harming.

If none of the above apply then the DSL will use their professional judgement to assess the risk to pupils involved and may decide, with input from the Headmaster, to respond to the incident without referral to the SPA or the Police.

During the decision making the DSL will consider if:

- There is a significant age difference between the sender/receiver.
- There is any coercion or encouragement beyond the sender/receiver.
- The imagery was shared and received with the knowledge of the child in the imagery.
- The child is vulnerable, for example subject to Child in Need, Child Protection or Early Help plans, Looked After, SEND.
- There is a significant impact on the children involved.
- The image is of a severe or extreme nature.

- The child involved understands consent.
- The situation is isolated or if the image been more widely distributed.
- There are other circumstances relating to either the sender or recipient that may add cause for concern.
- The children have been involved in incidents relating to youth produced imagery before.

If any of these circumstances are present the situation will be referred according to our child protection procedures, including referral to the SPA or the Police.

The DSL will record all incidents of youth produced sexual imagery, including the actions taken, rationale for actions and the outcome.

Female Genital Mutilation (FGM)

Female Genital Mutilation (FGM) is illegal in England and Wales under the FGM Act (2003). It is a form of child abuse and violence against women. [A mandatory reporting duty requires teachers to report 'known' cases of FGM in under 18s](#), which are identified in the course of their professional work, to the police.

The duty applies to all persons in school who are employed or engaged to carry out 'teaching work' in the school, whether or not they have qualified teacher status.

The duty applies to the individual who becomes aware of the case to make a report. It should not be transferred to the Designated Safeguarding Lead; however, the DSL should be informed.

If a teacher is informed by a girl under 18 that an act of FGM has been carried out on her or a teacher observes physical signs which appear to show that an act of FGM has been carried out on a girl under 18 and they have no reason to believe the act was necessary for the girl's physical or mental health or for purposes connected with labour or birth, the teacher should personally make a report to the police force in which the girl resides by calling 101. The report should be made immediately.

School staff are trained to be aware of risk indicators of FGM.

Concerns about FGM outside of the mandatory reporting duty should be reported using the school's child protection procedures. Staff should be particularly alert to suspicions or concerns expressed by female pupils about going on a long holiday during the summer holiday.

There should also be consideration of potential risk to other girls in the family and practising community. Where there is a risk to life or likelihood of serious immediate harm the teacher should report the case immediately to the police, including dialling 999 if appropriate.

There are no circumstances in which a teacher or other member of staff should examine a girl.

Forced Marriage

A forced marriage is a marriage in which one or both people do not (or in cases of people with learning disabilities cannot) consent to the marriage but are coerced into it. Coercion may include physical, psychological, financial, sexual and emotional pressure. It may also involve physical or sexual violence and abuse.

Forced marriage is recognised in the UK as a form of violence against women and men, domestic/child abuse and a serious abuse of human rights. Since June 2014 forcing someone to marry has become a criminal offence in England and Wales under the Anti-Social Behaviour, Crime and Policing Act 2014.

A forced marriage is not the same as an arranged marriage which is common in many cultures. The families of both spouses take a leading role in arranging the marriage but the choice of whether or not to accept the arrangement remains with the prospective spouses.

School staff should never attempt to intervene directly as a school or through a third party. Contact should be made with the SPA and/or the Forced Marriage Unit 200 7008 0151.

Honour-based Violence

Honour based violence (HBV) can be described as a collection of practices, which are used to control behaviour within families or other social groups to protect perceived cultural and religious beliefs and/or honour. Such violence can occur when perpetrators perceive that a relative has shamed the family and/or community by breaking their honour code.

Honour based violence might be committed against people who:

- become involved with a boyfriend or girlfriend from a different culture or religion;
- want to get out of an arranged marriage; become involved with a boyfriend or girlfriend from a different culture or religion;
- want to get out of an arranged marriage;
- want to get out of a forced marriage
- wear clothes or take part in activities that might not be considered traditional within a particular culture

It is considered a violation of human rights and may be a form of domestic and/or sexual abuse.

One Chance Rule

All staff are aware of the 'One Chance' Rule in relation to forced marriage, FGM and HBV. Staff recognise they may only have 'one chance' to speak to a child who is a potential victim and have just one chance to save a life.

The school are aware that if the victim is not offered support following disclosure that the 'One Chance' opportunity may be lost. Therefore, all staff are aware of their responsibilities and obligations when they become aware of potential forced marriage, FGM and HBV cases.

Private Fostering Arrangements

A [private fostering](#) arrangement occurs when someone other than a parent or close relative cares for a child for a period of 28 days or more, with the agreement of the child's parents. It applies to children under the age of 16 years old or 18 years old if the child is disabled.

Children looked after by the local authority or who are placed in residential schools, children's homes or hospitals are not considered to be privately fostered.

Private fostering occurs in all cultures and children may be privately fostered at any age.

The school recognise that most privately fostered children remain safe and well but are aware that safeguarding concerns have been raised in some cases. Therefore, all staff are alert to possible safeguarding issues, including the possibility that the child has been trafficked into the country.

By law, a parent, private foster carer or other persons involved in making a private fostering arrangement must notify Children's Social Care as soon as possible. However, where a member of staff becomes aware that a pupil may be in a private fostering arrangement, they will raise this with the DSL and the DSL will notify the SPA.

Children Looked After

The most common reason for children becoming looked after is as a result of abuse and neglect.

The school ensures that staff have the necessary skills and understanding to keep looked after children safe. Appropriate staff have information about a child's looked after legal status and care arrangements, including the level of authority delegated to the carer by the authority looking after the child and contact arrangements with birth parents or those with parental responsibility.

The designated teacher (Gilbert Watson) and governor for children looked after (Revd Margot Spencer) will have the appropriate level training to equip them with the knowledge and skills to undertake their role.

The designated teacher for children looked after and the DSL have details of the child's social worker and the name and contact details of the Surrey County Council's Head of Virtual School.

Children Missing Education

All children, regardless of their circumstances, are entitled to an efficient, full time education which is suitable to their age, ability, aptitude and any special educational needs they may have.

The school recognises that children missing education are at significant risk of underachieving, being victims of abuse and harm, exploitation or radicalisation, and becoming NEET (not in education, employment or training) later in life.

Where possible the school will hold more than one emergency contact number for each pupil.

The school will ensure that there is a record of joiners and leavers as defined in [The Education \(Pupil Registration\) \(England\) 2006](#).

When removing a child's name, the school will notify the Local Authority of: (a) the full name of the child, (b) the full name and address of any parent with whom the child normally resides, (c) at least one telephone number of the parent, (d) the child's future address and destination school, if applicable, and (e) the ground in regulation 8 under which the child's name is to be removed from the school register.

The school will make reasonable enquiries to establish the whereabouts of a child jointly with the Local Authority, before deleting the child's name from the school register if the deletion is under regulation 8(1), sub-paragraphs (f) (iii) and (h) (iii) of [The Education \(Pupil Registration\) \(England\) 2006](#).

The school will:

- Enter pupils on the admissions register on the first day on which the school has agreed, or has been notified, that the pupil will attend the school.
- Notify the Local Authority within five days of adding a child's name to the admission register. The notification must include all the details contained in the admission register for the new pupil.

- Monitor each child's attendance through their daily register and follow the SCC procedure in cases of unauthorised absence.
- Remove a child's name from the admissions register on the date that the child leaves the school.
- The school will notify the Local Authority when they are about to remove a child's name from the school register under any of the fifteen grounds listed in the regulations, no later than the date that the child's name is due to be removed.
- Where parents notify the school, in writing, of their intention to electively home educate the school will forward a copy of the letter to the Elective Home Education Team / Education Welfare. Where parents orally indicate that they intend to withdraw their child to be home educated and no letter has been received, the school will not remove the child from roll and will notify Education Welfare at the earliest opportunity.

Pupils Missing Out on Education

The vast majority of children engage positively with school and attend regularly. However, in order to flourish, some children require an alternative education offer or may require a modified timetable to support a return to full time education provision. It is recognised that children accessing alternative provision or a reduced or modified timetable may have additional vulnerabilities. Ofsted refer to these as Pupils Missing Out On Education (PMOOE), because they are not accessing their education in school in the 'usual way'.

The school will gain consent (if required in statute) from parents to put in place alternative provision and/or a reduced or modified timetable

The school will ensure that and parents (and the local authority where the pupil has a statement of special educational needs) are given clear information about alternative provision placements and reduced or modified timetables: why, when, where, and how they will be reviewed;

The school will keep the placement and timetable under review and involve parents in the review. Reviews will be frequent enough to provide assurance that the off-site education and/or modified timetable is achieving its objectives and that the pupil is benefitting from it;

The school will monitor and track children attending alternative provision to ensure that the provision meets the needs of the child

The school will comply with regular data returns requested by the Local Authority, regarding all pupils, of statutory school age, attending alternative provision and/or on a reduced or modified timetable.

The school leadership will report to governors of any formal direction of a pupil to alternative provision to improve behaviour.

The school leadership will report to governor's information regarding the use and effectiveness of the use of alternative provision and modified timetables.

School Attendance and Behaviour

Additional policies and procedures are in place regarding school attendance and behaviour.

The school recognises that absence from school and exclusion from school may be indicators of abuse and neglect, including the exploitation of children. The DSL will regularly liaise with members of school staff with

responsibility for behaviour and attendance to ensure risk is identified and appropriate intervention is in place to protect children from harm.

The school will work in partnership with Surrey Police and other partners for reporting children that go missing from the school site during the school day. Staff will be alert to signs of children at risk of travelling to conflict zones, female genital mutilation and forced marriage.

Restrictive Physical Intervention

We acknowledge that staff must only ever use physical intervention as a last resort, when a child is or at immediate risk of harming him/herself or others, and that at all times it must be the minimal force necessary to prevent injury to another person. Such events should be fully recorded and signed by a witness.

Staff who are likely to need to use physical intervention will be appropriately trained in “Positive Options” techniques.

Staff understand that physical intervention of a nature which causes injury or distress to a child may be considered under child protection and/or disciplinary procedures.

We recognise that touch is appropriate in the context of working with children, and all staff have been given ‘Safe Practice’ guidance to ensure they are clear about their professional boundaries.

When applying disciplinary measures such as physical intervention or isolation for children with SEND the school will consider the risks, given the additional vulnerabilities of these children.

Surrey County Council guidance [Touch and the use of restrictive Physical Intervention When Working with Children and Young People](#) provides further detailed information.

Whistleblowing and Low-Level Concerns

We recognise that children cannot be expected to raise concerns in an environment where staff fail to do so.

All staff should be aware of their duty to raise concerns, where they exist, about the management of child protection, which may include the attitude or actions of colleagues, poor or unsafe practice and potential failures in the school’s safeguarding arrangements. If it becomes necessary to consult outside the school, they should speak in the first instance, to the Area Schools Officer or LADO in accordance with the Whistleblowing Policy.

The NSPCC whistleblowing helpline: <https://www.nspcc.org.uk/what-you-can-do/report-abuse/dedicated-helplines/whistleblowing-advice-line/> is available for staff who do not feel able to raise concerns regarding child protection failures internally or have concerns about a way a concern is being handled by their school. Staff can call: 0800 028 0285 – line is available from 8:00 AM to 8:00 PM, Monday to Friday and Email: help@nspcc.org.uk.

Whistle-blowing regarding the Headmaster should be made to the Chair of the Governing Body whose contact details are available to staff.

Low-Level Concerns

Aldro takes safeguarding very seriously. This includes ensuring that adults who work with children do so in accordance with the ethos and policies set out by the school, including the Staff Code of Conduct. This policy sets out our approach to low-level concerns and details the processes available to all staff who may have concerns about the behaviour of other staff, adults or volunteers working with children.

Context and culture

Keeping Children Safe in Education (2021) advises that *‘As part of their whole school approach to safeguarding, schools and colleges should ensure that they promote an open and transparent culture in which all concerns about all adults working in or on behalf of the school or college (including supply teachers, volunteers and contractors) are dealt with promptly and appropriately.’*

Aldro is committed to creating an open and transparent culture in which ALL concerns about adults are shared responsibly, with the right people, and recorded and dealt with appropriately.

Allegations against adults who work with children

The school’s Child Protection and Safeguarding Policy and Whistleblowing Policy outline procedures that should be followed when allegations against adults may meet the following harms threshold:

Where it is alleged that anyone working in the school or a college that provides education for children under 18 years of age, including supply teachers, volunteers and contractors has:

- behaved in a way that has harmed a child, or may have harmed a child and/or;
- possibly committed a criminal offence against or related to a child and/or;
- behaved towards a child or children in a way that indicates he or she may pose a risk of harm to children; and/or
- behaved or may have behaved in a way that indicates they may not be suitable to work with children.

What constitutes a low-level concern?

As per KCSiE (2021), a low-level concern is any concern – no matter how small, and even if no more than causing a sense of unease or a ‘nagging doubt’ - that an adult working in or on behalf of the school or college may have acted in a way that:

- is inconsistent with the staff code of conduct, including inappropriate conduct outside of work; and
- does not meet the allegations threshold or is otherwise not considered serious enough to consider a referral to the LADO.

Examples of such behaviour could include, but are not limited to:

- being over friendly with children;
- having favourites;
- taking photographs of children on their mobile phone;
- engaging with a child on a one-to-one basis in a secluded area or behind a closed door; or,
- using inappropriate sexualised, intimidating or offensive language.

The school is aware that these behaviours could exist across a wide spectrum, from inadvertent or thoughtless behaviour through to that which is ultimately intended to enable abuse.

From time to time an individual may find him/herself in a situation which might appear compromising to others or which could be misconstrued. Equally, an individual may for whatever reason have behaved in a manner which on reflection he/she considers falls below the standard set out in the Code of Conduct. Self-reporting in these circumstances is encouraged as it demonstrates both awareness of the expected behavioural standards and self-awareness as to the individual's own actions or how they could be perceived. As such, the school sees self-reporting of low-level concerns as an important means of maintaining a culture where everyone aspires to the highest standards of conduct and behaviour.

Procedure

A member of staff who has a low-level concern should raise that concern verbally with the Headmaster or with the school's DSL. If, for any reason, the Headmaster and DSL are absent, the concern can be raised with the DDSL.

Concerns should be shared as soon as possible, and within 24 hours where the concern relates to a specific incident. It is, nevertheless, important for staff to understand that it is never too late to share a low-level concern.

Response

The DSL will discuss all low-level concerns he receives with the Headmaster as soon as possible and in any event within 24 hours of becoming aware of it.

The Headmaster will in the first instance satisfy himself that it is a low-level concern and should not be reclassified as an allegation and dealt with under the appropriate procedure below. The circumstances in which a low-level concern might be reclassified are where:

- (a) the threshold is met for an allegation
- (b) there is a pattern of low-level concerns which collectively amount to an allegation or
- (c) there is other information which, when considered, leads to an allegation.

Where the Headteacher is in any doubt whatsoever, advice will be sought from the LA Designated Officer, if necessary on a no-names basis.

Having established that the concern is low-level, the DSL or Headmaster, as appropriate, will discuss it with the individual who has raised it and will take any other steps to investigate it as necessary.

Recording

Where a low-level concern has been communicated, a confidential record will be kept in a central file which logs all low-level concerns. This is necessary to enable any patterns to be identified.

However, no record will be made of the concern on the individual's personnel file (and no mention made in job references) unless either:

- (a) the concern (or group of concerns) has been reclassified as an allegation as above; or
- (b) the concern (or group of concerns) is sufficiently serious to result in formal action under the school's grievance, capability or disciplinary procedure.

Links with other school policies:

Anti-bullying Policy
Behaviour Policy
Children Missing from Education and Missing Pupil Policy
Complaints Policy
Curriculum Policy
E-Safety, including staff use of mobile phones
Health & Safety
Healthcare and Pastoral Care Policy
Privacy Policy
PSHE, SMSC and RSE Policy
Recruitment Policy
Risk Assessment Policy
Staff Code of Conduct
Whistleblowing Policy

Further advice on safeguarding and child protection is available from:

[Surrey County Council Education Safeguarding Team](#)

NSPCC: <http://www.nspcc.org.uk/>

ChildLine: <http://www.childline.org.uk/pages/home.aspx>

CEOPSThinkuknow: <https://www.thinkuknow.co.uk/>

Anti-Bullying Alliance: <http://anti-bullyingalliance.org.uk/>

Beat Bullying: <http://www.beatbullying.org/>

Childnet International –making the internet a great and safe place for children. Includes resources for professionals and parents <http://www.childnet.com/>

Thinkuknow (includes resources for professionals and parents) <https://www.thinkuknow.co.uk/>

Safer Internet Centre <http://www.saferinternet.org.uk/>

Contextual Safeguarding Network <https://www.contextualsafeguarding.org.uk/>

Appendix - COVID-19/Lockdown arrangements for safeguarding and child protection at Aldro. The best interests of the young people in our care must always continue to come first.

Policy owner: Gilbert Watson **Date:** 18/09/2021

Date shared with Governors: 18/09/2021

Date shared with staff:

Date shared with parents:

This is also in line with DFE guidance <https://www.gov.uk/government/publications/covid-19-safeguarding-in-schools-colleges-and-other-providers/coronavirus-covid-19-safeguarding-in-schools-colleges-and-other-providers>

1. Context
2. Key contacts
3. Vulnerable children
4. Attendance monitoring
5. Designated Safeguarding Lead
6. Safeguarding Training and induction
7. Safer recruitment/volunteers and movement of staff
8. Online safety in schools and colleges
9. Children and online safety away from school and college
10. Supporting children not in school
11. Supporting children in school
12. Peer on Peer abuse
13. Acceptance of the policy

Context

From 20th March 2020 parents were asked to keep their children at home, wherever possible, and for schools to remain open only for those children of workers critical to the COVID-19 response - who absolutely need to attend. Schools and all childcare providers were asked to provide care for a limited number of children - children who are vulnerable and children who have a parent that is critical to the COVID-19 response and cannot be safely cared for at home. Aldro takes a whole-institution approach to safeguarding; any new policies and processes in response to COVID-19 will not weaken our approach to safeguarding or undermine our Child Protection and Safeguarding Policy. This appendix, of the Child Protection and Safeguarding Policy contains details of our safeguarding arrangements specifically in response to the current COVID-19 situation.

Key contacts

(DSL) Designated Safeguarding Lead Mr Gilbert Watson 01483 813548 watsong@aldro.org

DDSL Miss Suzie Shaw shaws@aldro.org

Headmaster Mr Chris Carlier 01483 810266 head@aldro.org

Safeguarding Governor Rev Margot Spencer 01483 416333 safegov@aldro.org

Vulnerable children

Vulnerable children include those who have a social worker and those children and young people up to the age of 25 with education, health and care (EHC) plans. Those who have a social worker include children who are subject to a Child Protection Plan, a Child in Need Plan and those who are looked after by the Local Authority. Aldro does not have any children who are in either of these categories at present. The Headteacher and Designated Safeguarding Lead (and deputies) know who our most vulnerable children are. They have the flexibility to offer a place to those on the edge of receiving children's social care support.

Aldro will always continue to work with and support children's social workers to help protect vulnerable children. Aldro will encourage our vulnerable children and young people to attend a school, including remotely if needed.

Attendance monitoring

Local authorities and education settings do not need to complete their usual day-to-day attendance processes to follow up on non-attendance. The Department for Education has introduced a daily online attendance form to keep a record of children of critical workers and vulnerable children who are attending school. This allows for a record of attendance for safeguarding purposes and allows schools to provide accurate, up-to-date data to the department on the number of children taking up places.

Designated Safeguarding Lead

Aldro has a Designated Safeguarding Lead (DSL) and a Deputy DSL. A member of the DSL team will always be available during school hours either onsite or via phone or online video - for example when working from home. Where a trained DSL (or deputy) is not on site, in addition to the above, a designated senior member of staff will assume responsibility for co-ordinating safeguarding on site. It is important that all our staff and volunteers have access to a trained DSL (or deputy). The DSL will continue to engage with social workers and attend all multi-agency meetings as and when necessary, which can be done remotely.

Safeguarding Training and induction

All Aldro DSLs have attended recent update training. All existing school staff have had safeguarding training and have read part 1 of Keeping Children Safe in Education 2021. The DSL will communicate with staff any new local arrangements, so they know what to do if they are worried about a child. Where new staff are recruited, or new volunteers enter our School, they will continue to be provided with a safeguarding induction. Current staff who are due to update their Child Protection training will be asked to complete the Child Protection Module via Smartlog.

Safer recruitment/volunteers and movement of staff

It remains essential that people who are unsuitable are not allowed to enter the children's workforce or gain access to children. When recruiting new staff, Aldro will continue to follow the relevant safer recruitment processes for their setting, including, as appropriate, relevant sections in part 3 of Keeping Children Safe in Education (2020) (KCSIE). In response to COVID-19, the Disclosure and Barring Service (DBS) has made changes to its guidance on standard and enhanced DBS ID checking to minimise the need for face-to-face contact. Where our School are utilising volunteers, we will continue to follow the checking and risk assessment process as set out in paragraphs 167 to 172 of KCSIE. Under no circumstances will a volunteer who has not been checked be left unsupervised or allowed to work in regulated activity. Aldro will continue to follow the legal duty to refer to the DBS anyone who has harmed or poses a risk of harm to a child or vulnerable adult. Full details can be found at paragraph 163 of KCSIE, in line with advice from the LADO where appropriate. Aldro will continue to consider and make referrals to the Teaching Regulation Agency (TRA) as per paragraph 166 of KCSIE and the TRA's 'Teacher misconduct advice for making a referral. During the COVID-19 period all referrals should be made by emailing Misconduct.Teacher@education.gov.uk Whilst acknowledging the challenge of the current National emergency, it is essential from a safeguarding perspective that any school is aware, on any given day, which staff/volunteers will be in the school or college, and that appropriate checks have been carried out, especially for anyone engaging in regulated activity. As such, Aldro will continue to keep the single central record (SCR) up to date as outlined in paragraphs 148 to 156 in KCSIE. The SCR can also be used to log details of any risk assessments carried out on volunteers and staff on loan from elsewhere.

Online safety in schools and colleges

Aldro will continue to provide a safe environment, including online. This includes the use of appropriate filters and online monitoring systems. Where children are using computers in school, appropriate supervision will be in place.

Children and online safety away from school and college

It is important that all staff who interact with children, including online, continue to look out for signs a child may be at risk. Any such concerns should be dealt with as per the Child Protection Policy and where appropriate referrals should still be made to children's social care and as required, the police. Aldro will ensure any use of online learning tools and systems is in line with privacy and data protection/GDPR requirements. Below are some things to consider when delivering virtual lessons, especially where webcams are involved:

Teachers should wear smart, professional attire, and children must wear suitable clothing for learning. Family members who might appear on screen must also be dressed so as not to detract from the learning.

Any computers used should be in appropriate areas. Staff must not be in bedrooms. Pupils may be in bedrooms if more communal space is unavailable, but only if sitting at a desk with the door ajar.

Live classes should be kept to a reasonable length of time, or the streaming may prevent the family 'getting on' with their day. Language must always be professional and appropriate, including by any family members in the background. Staff must only use platforms provided by Aldro to communicate with pupils

Supporting children not in school

Aldro is committed to ensuring the safety and wellbeing of all its children. Where the DSL has identified a child to be on the edge of social care support, or who would normally receive pastoral-type support in school, they should ensure that a robust communication plan is in place for that child or young person. The communication plans can include remote contact whether by phone or video. This plan must be reviewed regularly (at least once a fortnight) and, where concerns arise, the DSL will consider any referrals as appropriate. The school will share safeguarding messages on its website and social media pages. Aldro recognises that school is a protective factor for children and young people, and the current circumstances can affect the mental health of pupils and their parents/carers. Staff at Aldro need to be aware of this in setting expectations of pupils' work where they are at home. The School will ensure that where we care for children of critical workers and vulnerable children on site, we ensure appropriate support is in place for them.

Supporting children in school

Aldro

- is committed to ensuring the safety and wellbeing of all its students.
- will continue to be a safe space for all children to attend and flourish. The Headmaster will ensure that appropriate staff are on site and staff to pupil ratio numbers are appropriate, to maximise safety.
- will refer to the Government guidance for education and childcare settings on how to implement social distancing and continue to follow the advice from Public Health England on handwashing and other measures to limit the risk of spread of COVID19.
- will ensure that where we care for children of critical workers and vulnerable children on site, appropriate support is in place for them.

Peer on Peer Abuse

Aldro recognises that during the closure a revised process may be required for managing any report of peer-on-peer abuse and for supporting victims. Where Aldro receives a report of peer-on-peer abuse, we will follow the principles set out in part 5 of KCSIE and those outlined within of the Child Protection and Safeguarding Policy. The school will listen and work with the young person, parents/carers and any multiagency partner required to ensure the safety and security of that young person. Concerns and actions must be recorded, and appropriate referrals made.